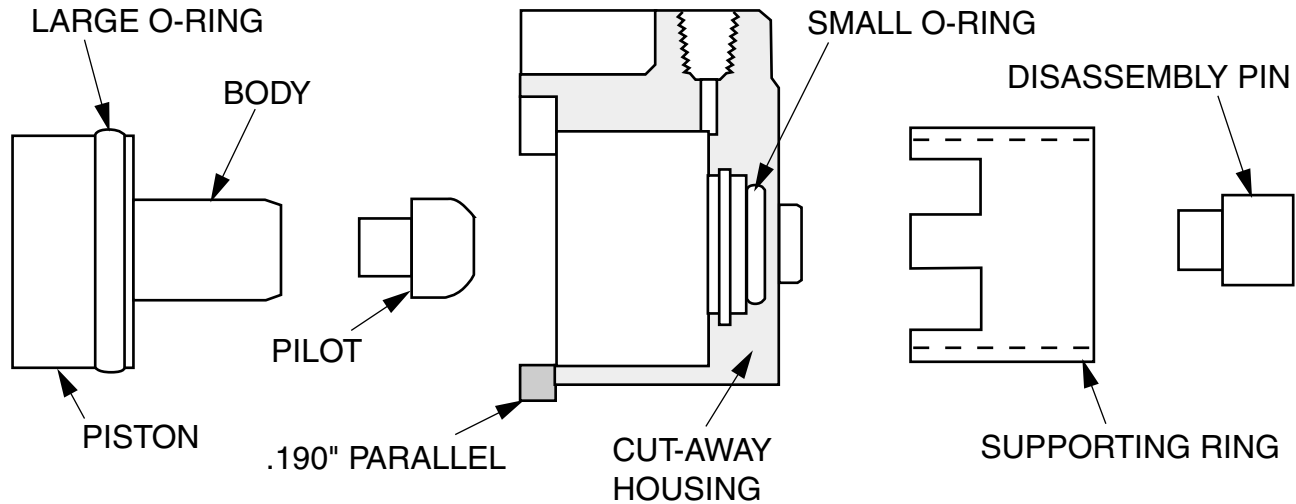




OVERHAULING INSTRUCTIONS FOR:

**CALIPER
30050007**

**OVERHAUL KIT
30059009**



MATERIALS REQUIRED:

- 1.) Large "O" Ring
- 2.) Small "O" Ring
- 3.) Disassembly Pin
- 4.) Pilot Pin
- 5.) .190" Parallel
- 6.) Support Ring
- 7.) Arbor press or rigid drill press as a substitute.

DISASSEMBLY:

- 1.) Remove caliper housing from vehicle.
- 2.) Remove bleed screws and lining.
- 3.) Set the caliper on the arbor press or drill press with the bore facing downward. Slip the .190" parallel just under the lip of the bore, as shown in the diagram so that the caliper will be level and the piston can be pushed out without interference. Place the smaller diameter of the disassembly pin into the body and apply pressure. It should take no more than 100 lbs. pressure on the pin to force the piston and body assembly out of the housing.
- 4.) Using a sharp needle or pin, pick out the small and large diameter "O" rings and discard them.
- 5.) Clean the caliper housing by soaking in solvent and brushing, or clean as well as possible. Don't soak the piston and body assembly in solvent. Merely wipe it. If especially grimy, wipe with a cloth moistened with solvent.

ASSEMBLY:

- 1.) After making sure that all solvent has been blown off or evaporated (it could harm the "O" rings) put the small and large "O" rings into place.
- 2.) Lubricate the large "O" ring, body, and housing bore with red aircraft brake fluid.
- 3.) Set the support ring on the arbor press or drill press with the prongs pointing up. Rest the caliper housing on the support ring with the bore facing upward. Place the bullet-nosed end of the pilot into the center hole of the cylinder bore. Set the hole in the end of the body over the stem of the pilot and prepare to press the piston into the bore.
CAUTION! This operation is critical. Make sure that everything is centered, square, and parallel as required while it is being pressed in. Stop for a moment as the piston becomes ready to enter the bore and make certain that the piston is well centered with the bore so that the piston will not score the bore as it is pushed in. Press the piston down as far as it will go.
- 4.) Replace lining and bleed screws. Install caliper on vehicle.



TOL-O-MATIC, INC.

3800 County Road 116, Hamel, MN 55340

<http://www.Tolomatic.com> • Email: Help@Tolomatic.com

Phone: (763) 478-8000 • Fax: (763) 478-8080 • Toll Free: 1-800-328-2174



Information furnished is believed to be accurate and reliable. However, Tol-O-Matic assumes no responsibility for its use or for any errors that may appear in this document. Tol-O-Matic reserves the right to change the design or operation of the equipment described herein and any associated motion products without notice. Information in this document is subject to change without notice.