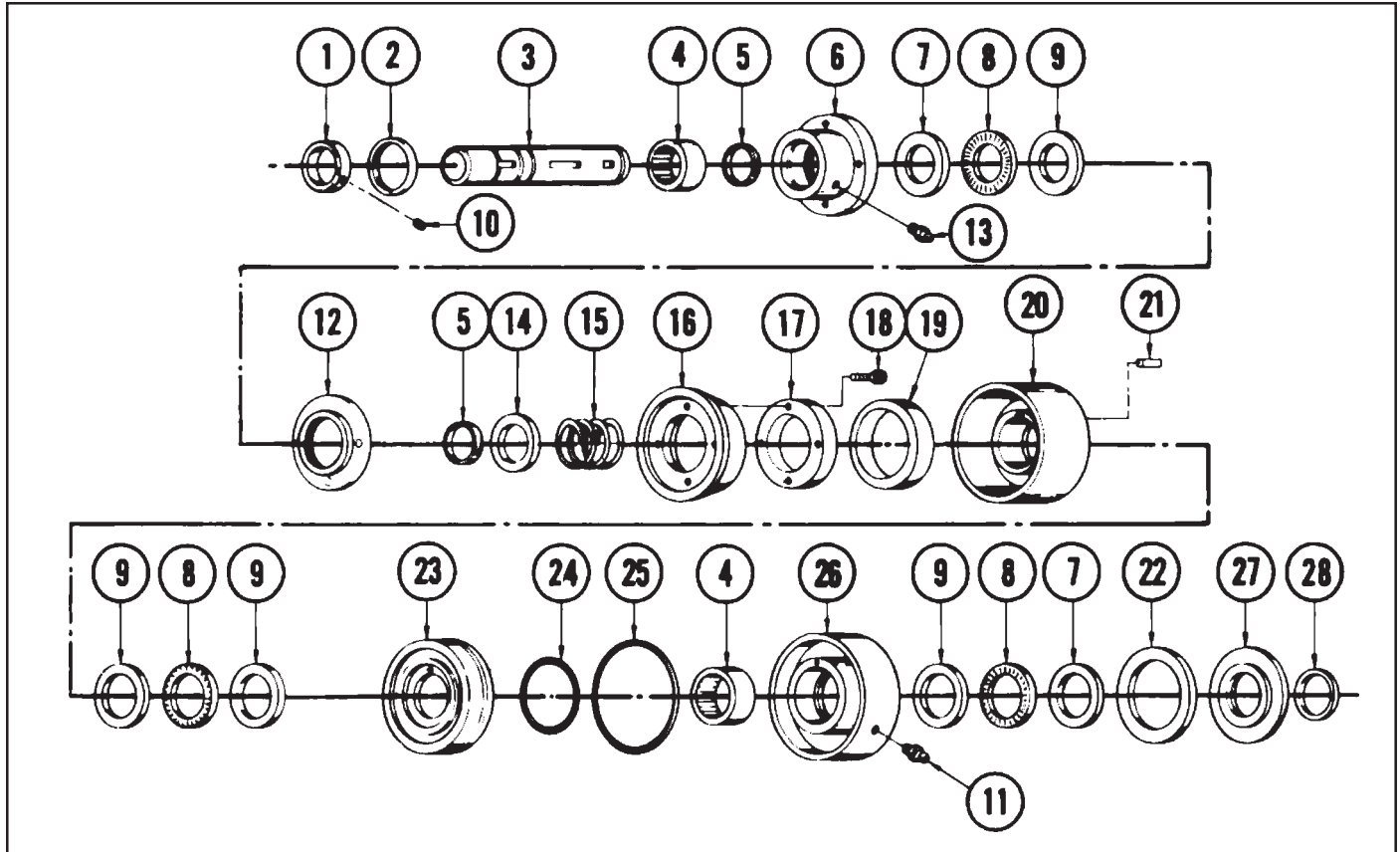




Disc/Cone Clutch

1307D



List of Parts

| Item | Part No. | Description | Qty. for Model No. 1307-0308 | Qty. for Model No. 1307-031 | Item | Part No. | Description | Qty. for Model No. 1307-0308 | Qty. for Model No. 1307-0310 |
|------|-----------|------------------|------------------------------|-----------------------------|------|-----------|----------------------|------------------------------|------------------------------|
| 1. | 1307-1008 | Collar, Shaft | | 1 | 15. | 1207-1033 | Spring | 1 | 1 |
| 2. | 1207-1016 | Ring, Retaining | 1 | 1 | 16. | 1207-1003 | Cone | 1 | 1 |
| 3. | 1207-1018 | Shaft, 1/2" Bore | 1 | | 17. | 1207-1009 | Adapter, Ring | 1 | 1 |
| | 1207-1019 | Shaft, 5/8" Bore | | 1 | 18. | 1307-2018 | Screw, Soc. Hd. Cap. | 4 | 4 |
| 4. | 1307-1015 | Bearing, Roller | 2 | 2 | 19. | 1207-1011 | Seal, Felt | 2 | 2 |
| 5. | 1307-1013 | Ring, Retaining | 2 | 2 | 20. | 1307-2028 | Cup | 1 | 1 |
| 6. | 1207-1012 | Adapter | 1 | 1 | 21. | 1300-1012 | Key | 1 | 1 |
| 7. | 1307-1009 | Race, Bearing | 2 | 2 | 22. | 1207-1010 | Seal, Felt | 1 | 1 |
| 8. | 0200-1214 | Bearing, Thrust | 3 | 3 | 23. | 1207-1005 | Piston | 1 | 1 |
| 9. | 1307-2009 | Race, Bearing | 4 | 4 | 24. | 0720-1004 | Seal, O-Ring | 1 | 1 |
| 10. | 1301-1174 | Screw, Set | 2 | 2 | 25. | 1207-1014 | Seal, O-Ring | 1 | 1 |
| 11. | 0100-1601 | Grease Fitting | 1 | 1 | 26. | 1207-1006 | Cylinder | 1 | 1 |
| 12. | 1207-1002 | Adapter, Cone | 1 | 1 | 27. | 1207-1007 | Adapter, Seal | 1 | 1 |
| 13. | 1208-1034 | Grease Fitting | 1 | 1 | 28. | 1207-1060 | Ring, Retaining | 2 | 2 |
| 14. | 1207-1008 | Washer | 1 | 1 | | | | | |

The Tol-O-Matic Disc/Cone Clutch is as simple to install as a sprocket or sheave.

Simply slip the clutch over the shaft to the desired position, align with keyway and insert key. After final alignment with mating sprocket or sheave, tighten set screws to lock clutch in place.

Connect air or hydraulic source (not over 100 psi pressure) to cylinder port. Make sure no side or end thrust is transmitted to clutch. Flexible hose (**not plastic tubing**) may be used. A restraining member may be necessary to prevent cylinder rotation.

Lubrication will be required after every 4 weeks of operation. Use a lubricant such as ORE-LUBE G-1/3.* Two zerk fittings are provided for this purpose.

After long periods of operation, it may be necessary to disassemble the clutch for cleaning and inspection.

CAUTION: CLUTCHES ARE UNDER SPRING TENSION. USE CARE WHEN DIS-ASSEMBLING.

To disassemble, remove the retaining rings from the cylinder end of the clutch shaft and slide all parts off this end. Assemble all parts onto the shaft from the opposite end. This procedure is necessary to keep from damaging the edges of the bearing seal lips. See exploded view on the other side for proper sequence of assembly.

Wipe off all old lubricant before applying fresh grease. Use Ore-Lube G-1/3 or similar. If it is necessary to remove the piston from the cylinder, re-lubricate the O-rings with a mineral base O-ring grease.

Remove any grease that may have contacted the cone and clean out any foreign material in the cup. Be careful not to re-contaminate any internal parts.

If these simple procedures are followed, your Tol-O-Matic Disc/Cone Clutch will give you years of trouble-free service.

ORE-Lube is a trademark of ORE-Lube Midwest Corp., 2480 S. Highway 100, Minneapolis, Minnesota 55416



TOL-O-MATIC, INC.

3800 County Road 116, Hamel, MN 55340
<http://www.Tolomatic.com> • Email: Help@Tolomatic.com
 Phone: (763) 478-8000 • Fax: (763) 478-8080 • Toll Free: 1-800-328-2174



Information furnished is believed to be accurate and reliable. However, Tol-O-Matic assumes no responsibility for its use or for any errors that may appear in this document. Tol-O-Matic reserves the right to change the design or operation of the equipment described herein and any associated motion products without notice. Information in this document is subject to change without notice.