



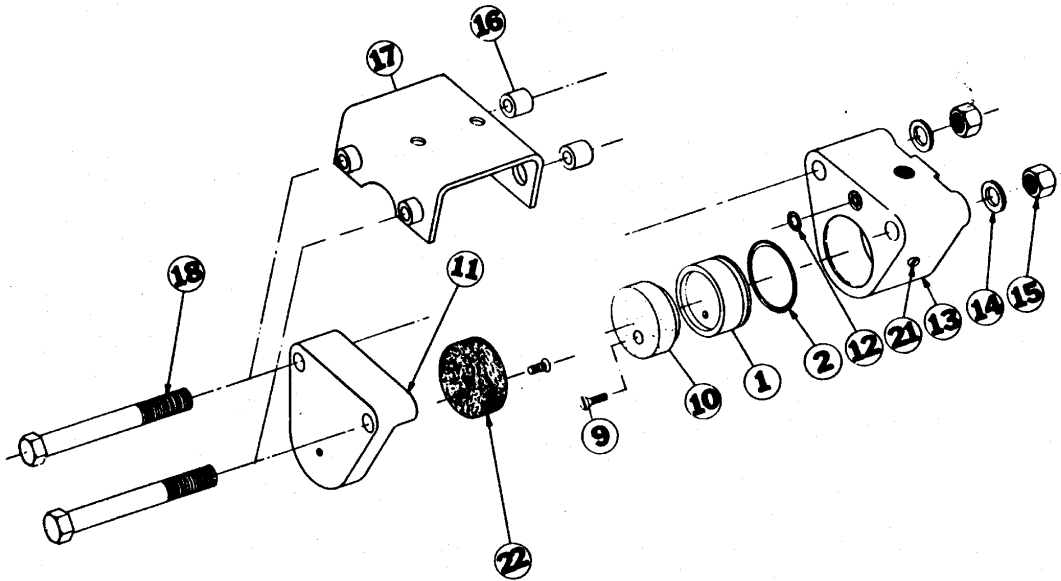
### Caliper Disc Brakes 10 Series Hydraulic & Pneumatic

#### List of Parts

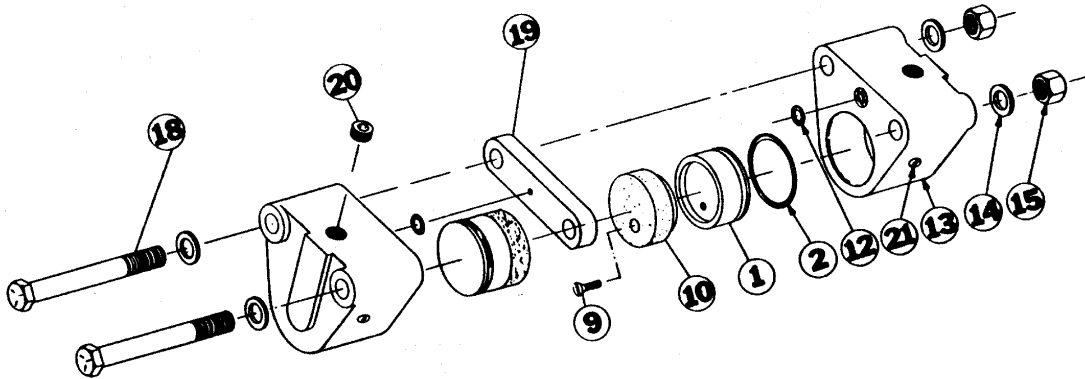
| Item | Part No.  | Description                     | Single-Acting |           |       |       |        |        |        |         |         |         | Double-Acting |       |       |        |        | Double-Acting Retractable |        |
|------|-----------|---------------------------------|---------------|-----------|-------|-------|--------|--------|--------|---------|---------|---------|---------------|-------|-------|--------|--------|---------------------------|--------|
|      |           |                                 | Assy. No.     | Model No. | P10SA | P10SB | P10SAF | P10SBF | H10SAC | H10SAFC | H10SACG | H10SBCG | H10SAFCG      | P10DA | P10DB | H10DAC | H10DBC | H10DACG                   | H10DBC |
| 1    | 0701-1062 | Piston                          | 1             | 1         | 1     | 1     | 1      | 1      | 1      | 1       | 1       | 2       | 2             | 2     | 2     | 2      | 2      |                           |        |
| 2.   | 0701-1004 | O-Ring, Buna-N                  | 1             | 1         | 1     | 1     | 1      | 1      |        |         |         | 2       | 2             | 2     | 2     |        |        | 2                         | 2      |
|      | 0701-1014 | O-Ring, EPR                     |               |           |       |       |        |        | 1      | 1       | 1       |         |               |       |       | 2      | 2      |                           |        |
| 3.   | 0708-1002 | Piston, Retractable             |               |           |       |       |        |        |        |         |         |         |               |       |       |        |        | 2                         | 2      |
| 4.   | 0708-1009 | Spring, Compression             |               |           |       |       |        |        |        |         |         |         |               |       |       |        |        | 2                         | 2      |
| 5.   | 0708-1007 | Screw, Shoulder                 |               |           |       |       |        |        |        |         |         |         |               |       |       |        |        | 2                         | 2      |
| 6.   | 0708-1004 | Plate, Seal                     |               |           |       |       |        |        |        |         |         |         |               |       |       |        |        | 4                         | 4      |
| 7.   | 1001-1021 | O-Ring, Buna-N                  |               |           |       |       |        |        |        |         |         |         |               |       |       |        |        | 2                         | 2      |
| 8.   | 0708-1003 | Puck, Retractable               |               |           |       |       |        |        |        |         |         |         |               |       |       |        |        | 2                         | 2      |
| 9.   | 0701-1006 | Screw, Flat Head Slotted        | 2             | 2         | 2     | 2     | 2      | 2      | 2      | 2       | 2       | 2       | 2             | 2     | 2     | 2      | 2      | 4                         | 4      |
| 10.  | 0701-1005 | Puck                            | 1             | 1         | 1     | 1     | 1      | 1      | 1      | 1       | 1       | 2       | 2             | 2     | 2     | 2      | 2      |                           |        |
| 11.  | 0705-1001 | Housing, Dead Side              | 1             | 1         | 1     | 1     | 1      | 1      | 1      | 1       | 1       |         |               |       |       |        |        |                           |        |
| 12.  | 0701-1003 | O-Ring, Buna-N                  |               |           |       |       |        |        |        |         |         | 2       | 2             | 2     | 2     |        |        | 2                         | 2      |
|      | 0701-1013 | O-Ring, EPR                     |               |           |       |       |        |        |        |         |         |         |               |       |       | 2      | 2      |                           |        |
| 13.  | 0708-1001 | Housing, Pneumatic, Retractable |               |           |       |       |        |        |        |         |         |         |               |       |       |        |        | 2                         | 2      |
|      | 0708-1055 | Housing, Pnueumatic             | 1             | 1         | 1     | 1     |        |        |        |         |         |         |               |       |       |        |        |                           |        |
|      | 0708-1023 | Housing, Hydraulic              |               |           |       |       | 1      | 1      | 1      | 1       | 1       |         |               |       |       |        |        |                           |        |
|      | 0708-1056 | Housing, Pnueumatic             |               |           |       |       |        |        |        |         |         | 2       | 2             |       |       |        |        |                           |        |
|      | 0708-1057 | Housing, Hydraulic              |               |           |       |       |        |        |        |         |         |         |               | 2     | 2     | 2      | 2      |                           |        |
| 14.  | 0701-1007 | Washer                          | 4             | 4         |       |       | 4      |        | 4      | 4       | 4       |         | 4             | 4     | 4     | 4      | 4      | 4                         | 4      |
| 15.  | 0701-1008 | Nut, Flexloc                    | 2             | 2         | 2     | 2     | 2      | 2      | 2      | 2       | 2       | 2       | 2             | 2     | 2     | 2      | 2      | 2                         | 2      |
| 16.  | 0707-1015 | Ring, Spacer                    |               |           | 4     | 4     |        | 4      |        |         | 4       |         |               |       |       |        |        |                           |        |
| 17.  | 0705-1016 | Bracket                         |               |           | 1     | 1     |        | 1      |        |         | 1       |         |               |       |       |        |        |                           |        |
| 18.  | 3030-1007 | Hex Bolt                        | 2             | 2         |       |       | 2      |        | 2      | 2       |         |         |               |       |       |        |        |                           |        |
|      | 0708-1019 | Hex Bolt                        |               |           | 2     |       |        | 2      |        | 2       |         |         |               |       |       |        |        |                           |        |
|      | 0701-1026 | Hex Bolt                        |               |           |       | 2     |        |        |        |         |         |         |               |       |       |        |        |                           |        |
|      | 3030-1022 | Hex Bolt                        |               |           |       |       |        |        |        |         |         | 2       | 2             | 2     | 2     | 2      | 2      | 2                         | 2      |
| 19.  | 0701-1031 | Spacer, "A" for 5/32 Thick Disc |               |           |       |       |        |        |        |         |         | 1       |               | 1     |       | 1      |        | 1                         |        |
|      | 0702-1032 | Spacer, "B" for 1/4 Thick Disc  |               |           |       |       |        |        |        |         |         |         | 1             |       | 1     |        | 1      |                           | 1      |
|      | 0742-1007 | Spacer, "B" for 1/4 Thick Disc  |               | 1         |       | 1     |        |        |        | 1       |         |         |               |       |       |        |        |                           |        |
| 20.  | 1014-1065 | Plug, Pipe 1/8-27 NPT           |               |           |       |       |        |        |        |         |         | 1       | 1             | 1     | 1     | 1      | 1      | 1                         | 1      |
| 21.  | 0720-1099 | Screw, Bleeder                  |               |           |       |       | 2      | 2      | 2      | 2       | 2       |         |               | 4     | 4     | 4      | 4      |                           |        |
| 22.  | 0701-1032 | Puck, dead side                 | 1             | 1         | 1     | 1     | 1      | 1      | 1      | 1       | 1       |         |               |       |       |        |        |                           |        |

Note: If the caliper assembly number contains the suffix "G," order EPR seals only.

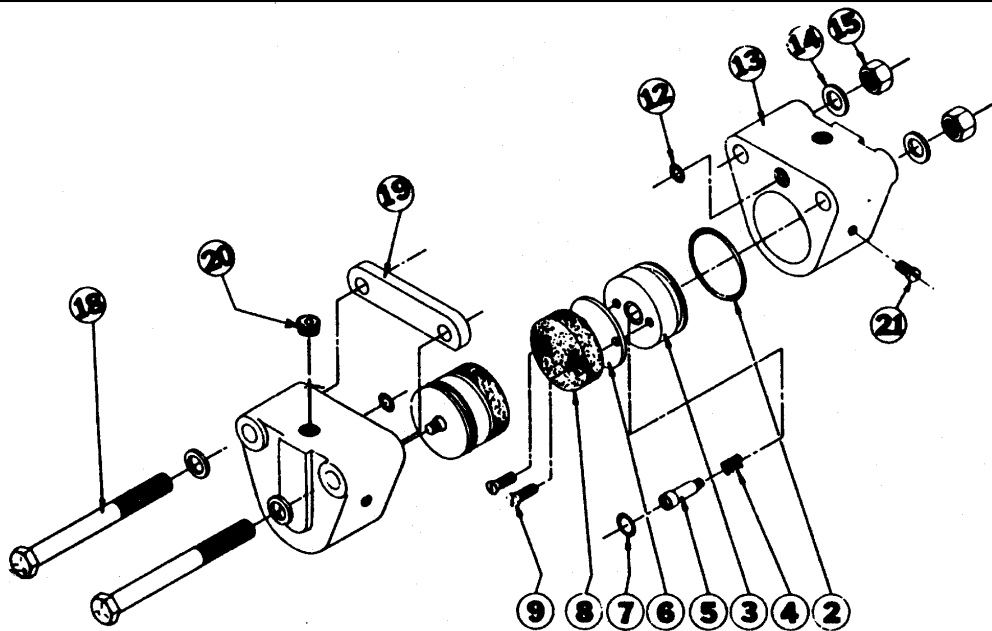
H 10S  
P 10S



H 10D  
P 10D



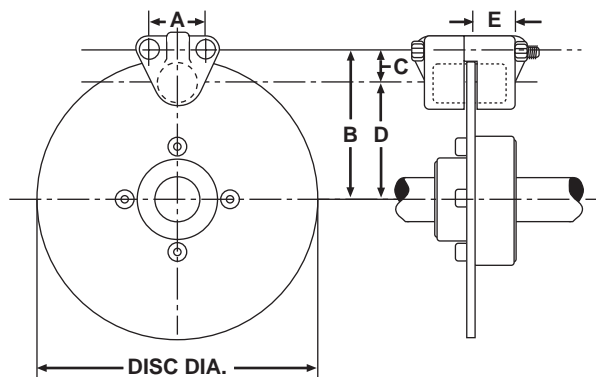
P10DR



Note: Hydraulic models purchased prior to February 1, 1988, utilize O-Ring seals on bleeder screws. Hydraulic models purchased after that date use Nylon sealing washers.

1. Mount the Caliper Unit with the two SAE Grade 5 hex head bolts. See diagram for dimensions. Tighten nuts to 22 Ft.-Lbs. on 10 series. Care must be taken in mounting the calipers to be sure puck faces are parallel with the disc. Use shims if required. To prevent excessive wear, be sure disc does not rub against the pucks when they are retracted, or against the Housing.
2. The floating type disc must be free to move axially so that the moveable puck will push in against the springs and into the fixed puck, otherwise unequal wear or bending of the disc will result. The springs on the floating disc must be on the fixed puck side of the caliper. Proper clearance between the Puck and Disc is .010" minimum per side to a maximum of .031" per side when new.
3. Discs must be free of dirt and grease for maximum life and braking action.
4. (H)(P)10D and (H)(P)10DR double-acting brakes have internal porting between the two cylinder housings making it necessary to run only one fluid line to the caliper assembly.
5. Pneumatically operated brakes must be connected to a source of clean, dry, filtered air at a pressure not to exceed 150 PSI. The use of an in-line mist lubricator is recommended to provide a very slight amount of lubrication. Any mineral base lubricating oil compatible with Buna-N Seals may be used.
6. Hydraulically operated brakes may be operated at pressures up to 1000 PSI using a petroleum base hydraulic fluid compatible with Buna-N Seals. **If caliper has a suffix "G", use automotive brake fluid only. Also, when replacing seals, if automotive brake fluid is being used order EPR seals.**
7. When plumbing the fluid system, use a minimum amount of pipe thread sealant on joints to prevent the sealant from entering the system.
8. Pressure in the brake cylinder must be relieved when the brake is off. This can be accomplished by using a three-way control valve. Any back pressure in the cylinder will cause drag and excess heat which will result in reduced puck life. If used with master cylinders, residual pressure checks must be removed.
9. The hydraulic type brakes are bled by loosening bleeder screw/screws at high point of brake cylinder, causes sluggish braking operation. **Note: Do not pressure bleed with more than 5 PSI.**

## Mounting Dimensions



**HP10 Brakes (Hydraulic/Pneumatic)**

| Disc Size (In.) | HP 10 Series |         |       |         |        |
|-----------------|--------------|---------|-------|---------|--------|
|                 | A            | B       | C     | D       | E*     |
| 6-5/16          | 1-5/8        | 3-15/32 | 15/16 | 2-17/32 | 1-5/32 |
| 8               | 1-5/8        | 4-5/16  | 15/16 | 3-3/8   | 1-5/32 |
| 10              | 1-5/8        | 5-5/16  | 15/16 | 4-3/8   | 1-5/32 |
| 12              | 1-5/8        | 6-5/16  | 15/16 | 5-3/8   | 1-5/32 |
| 16              | 1-5/8        | 8-5/16  | 15/16 | 7-3/8   | 1-5/32 |

\*Caliper mounting surface nearest to surface of disc.



## **TOL-O-MATIC, INC.**

3800 County Road 116, Hamel, MN 55340  
<http://www.Tolomatic.com> • Email: [Help@Tolomatic.com](mailto:Help@Tolomatic.com)  
Phone: (763) 478-8000 • Fax: (763) 478-8080 • Toll Free: 1-800-328-2174



Information furnished is believed to be accurate and reliable. However, Tol-O-Matic assumes no responsibility for its use or for any errors that may appear in this document. Tol-O-Matic reserves the right to change the design or operation of the equipment described herein and any associated motion products without notice. Information in this document is subject to change without notice.