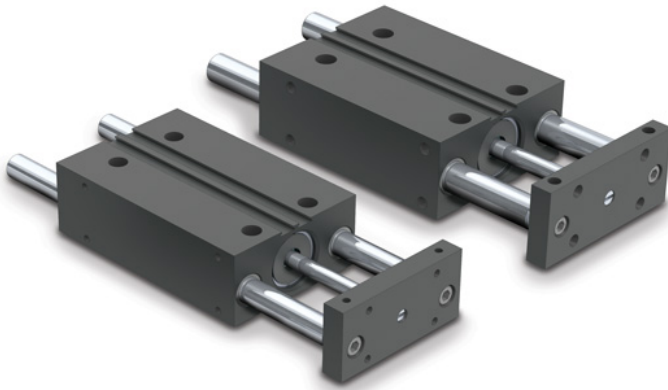


## Power Block Features



- 2 bore sizes from 1.062 to 1.25 in (27.0mm to 31.8 mm)
- Forces up to 123 lbs (547 N)
- Stroke lengths up to 3 inches (76 mm)
- Durable and tough lightweight extruded aluminum design offers low profile
- Options include stop collar/bumper kit, dual tooling plates and switches
- Precision steel guide rods with composite bearings to provide load support