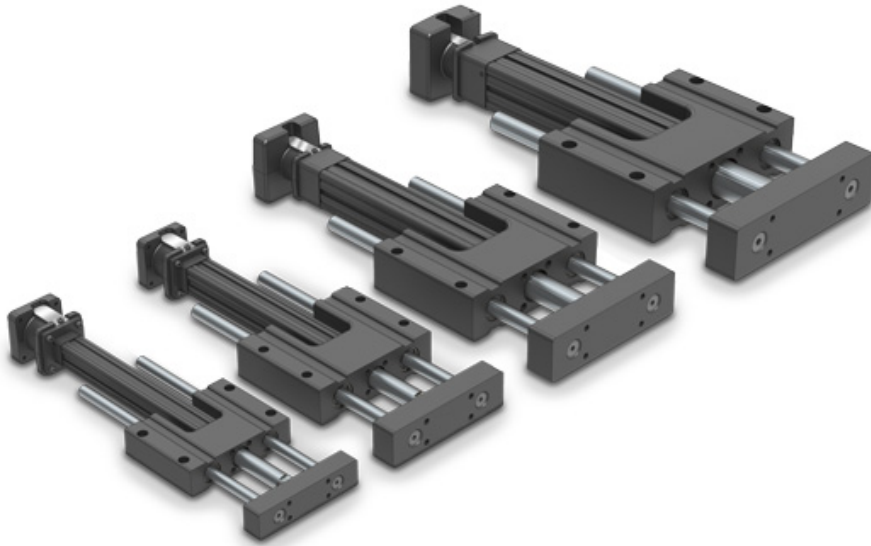


GSA Features



- 4 frame sizes with guided rod bearing assembly
- Forces up to 4.2 kN (950 lbf)
- Strokes lengths up to 914 mm (36 in)
- Ball and acme screw options
- Wide tooling plate for end effector mounting
- Linear ball or composite bearing options with internal lubrication of guide rods for increased bearing life
- Standard or oversized guide rod diameter for increased rigidity and lower deflection
- Your Motor Here® compatible