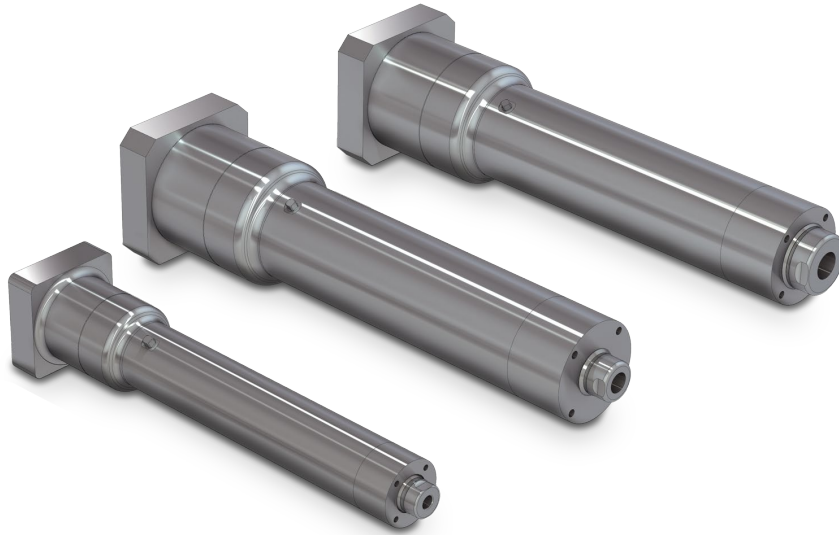


ERD Hygienic Features



- Electric cylinder sizes with hygienic design
- USDA and 3A (#14159-1-2010) approved hygienic design
- 300 Series stainless steel construction
- IP69k, Clean-in-place compatible (static)
- Force capabilities up to 7,868 lbf (35 kN)
- Stroke lengths up to 39.4 inches (1 m)
- Roller, ball and acme screw options
- Your Motor Here® compatible