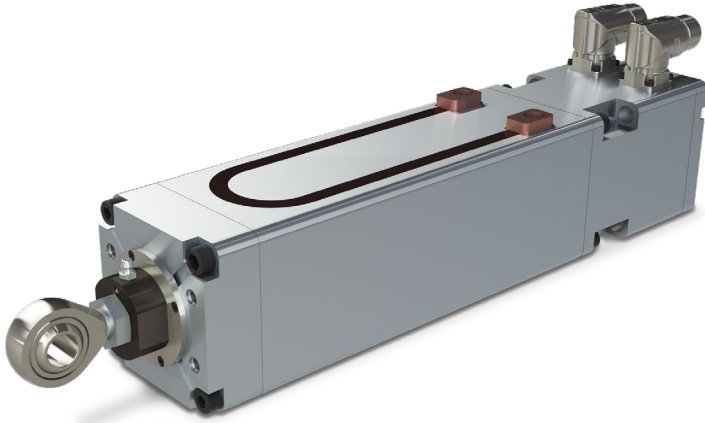


CSWX & CSW Features



- Compact, lightweight actuator designed for robot carried resistance spot welding
- Integration for 7th axis operation with most global robot manufacturers
- 30+ million cycles for CSWX models and 20+ million cycles for CSW
- Standard roller screw with highest dynamic load rating for more welds over competing roller screw, ball screws or pneumatic actuators
- Skewed motor windings designed for welding minimizes motor cogging for the best force repeatability (+/- 3% over life of actuator)
- Forces to 18 kN (4,047 lbf) [CSW forces to 15.6 kN (3,500 lbf)]
- Water cooling option
- Optional double "D" rod for anti-rotate of the thrust rod