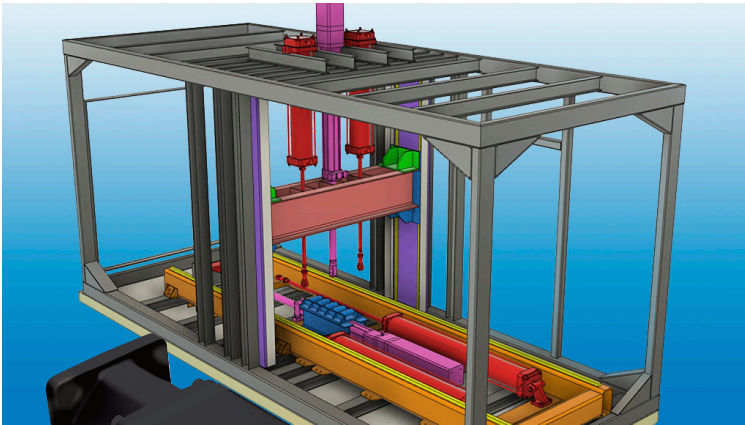
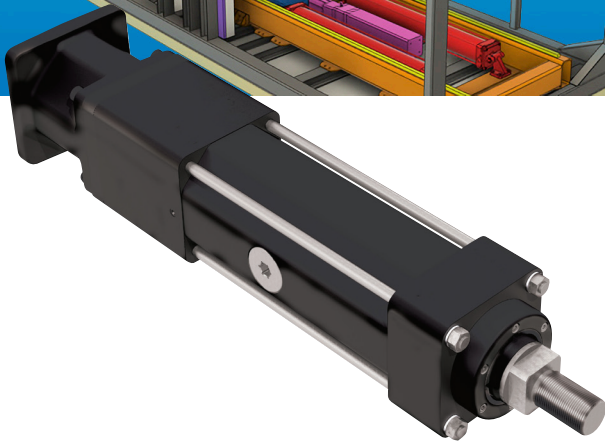


**APPLICATION SOLUTION: Construction Material Test Mechanism**



**Product Family:**  
**Product Used:** RSX Extreme Force Rod-Style  
 Electric Actuator  
**Product Type:** Modified Standard

**Application Requirements:**  
**Stroke (Max.):** 25 in (635 mm)  
**Force (Max.):** 40,000 lbf (178 kN)



**Application Description**

Validation of the mechanical properties of recycled material used for the construction of carbon-neutral homes

**Challenge**

A distributor was approached by a customer requesting a powerful and versatile actuator that could be configured in multiple ways to fit their existing equipment.

**Tolomatic Solution**

The RSX128 Extreme Force Electric Linear Actuator was brought forward as the perfect solution. Tolomatic created a customized version with multiple attachment options for front, rear or pivot mounting. This allows the customer to mount the actuator in different positions on their test equipment, with or without lever. For further versatility, the distributor supplied a set gearheads with the same mounting flange on the actuator side as that of the motor. This allows the customer to either mount their motor directly on our actuator or sandwich a gearhead between the same motor and our actuator.

**Customer Benefit**

- Reduced investment. Two actuators instead of six or more
- Reduced footprint. The same equipment can be used for a multitude of tests