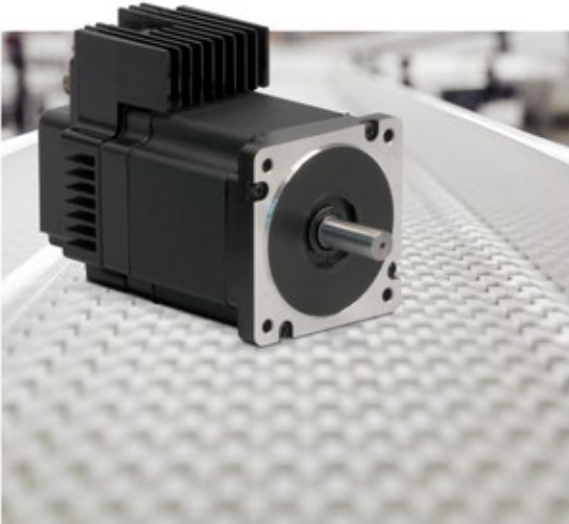


**APPLICATION SOLUTION: Conveyor Line Change-Over**



**Product Family:** Electric  
**Product Used:** ACSI34 Basic - Rotary  
Application Mode  
**Product Type:** Standard

**Application Requirements:**  
**Speed:** 800 RPM  
**Torque:** 0.9 N-m (8 in-lbs) Continuous

**Application Description:**

Directing product to secondary conveyor line.

**Challenge:**

An OEM of conveyor and packaging systems had a rotary application that used a lever arm to direct product from one conveyor line to a second, perpendicular conveyor. The application required only two positions. To prevent product damage the motion profiles required specific accelerations and speeds while maintaining the required conveyor speed to maximize production efficiency.

The existing drive and motor combination was a traditional system using a high-voltage drive, cables and servo motor. However, the cost of that system was excessive since the selected drive exceeded the performance requirements of the application. The customer also needed to manage limited electrical cabinet space and route the encoder and power cables.

**Tolomatic Solution:**

Tolomatic recommended the ACSI34 Basic for this application. This integrated servo motor and drive was simple to setup and control using digital I/O and provided cost savings of 60% over a traditional servo drive, cables and motor system. In addition, the I/O and power cables required were significantly smaller than the traditional setup the customer had used and eliminated the need for a noise sensitive encoder cable. With no need to house a drive in the electrical cabinet, the integrated drive/servomotor also saved significant space allowing for a smaller, more cost-effective solution.

**Customer Benefit:**

- Easy set-up and control
- Cost savings of 60% over competing systems
- Able to use smaller, more cost-effective electrical cabinet