



**The Trusted Partner  
When Motion Matters**





## Our Commitment to Quality

Our goal is to ensure that every interaction, every product, and every outcome leaves our customers completely satisfied and confident in their choice of Tolomatic.



**Right Product**  
Expert guidance to match the exact application needs.



**Right Fit**  
Actuators designed to fit and function flawlessly.



**Right Time**  
Reliable lead times and on-schedule shipments.



**Best Performance**  
Precision-engineered solutions built for durability and reliability.



QUALITY MANAGEMENT SYSTEM  
**ISO 9001**  
Certified Site: Hamel, MN, USA

QUALITY MANAGEMENT SYSTEM  
**ISO 9001**  
Certified Site: Suzhou, CN

ENVIRONMENTAL MANAGEMENT SYSTEM  
**ISO 14001**  
Certified Site: Rüsselsheim, DE

*"Quality isn't just a step in the process—  
it's the foundation of everything we do."*

Adam Toles, Co-owner

## Mission Critical Applications

Driven by a deep understanding of customers' needs, Tolomatic delivers motion solutions with high precision, performance, and reliability.



### Automotive & Transportation

Resistance spot welding, joining, pressing, riveting, stamping, lifting, test systems



### Metals & Fabrication

Pressing, cutting, punching, stamping, forming, welding, joining, workholding, inspection



### Food & Beverage

Dispensing, filling, cutting, pressing, depositing, stacking, inspection



### Medical & Life Science

Positioning, injecting, dispensing, scanning, cutting, coating, testing, resistance adjustment



### Material Handling

Packaging, conveying, gantry system, palletizing, stacking, height positioning, AGV functions



### Plastics & Rubber

Injection molding, thermoforming, blow molding, ultrasonic welding, cutting, testing



### Building & Construction

Saw mill, timber planing, lumber fencing, structural 3D printing, precision frame cutting



### Mining, Oil, & Gas

Hydraulic replacement, conveying, cable & pipe management



### Aerospace & Defense

Test systems, pressing, positioning, leveling, active security barriers, rapid prototyping








See success stories and learn more  
[tolomatic.com/applications](https://tolomatic.com/applications)



Machine Design Engineers Rely on Tolomatic

Tolomatic is committed to being your trusted partner when motion matters. We collaborate with your team to create linear motion solutions that satisfy the most challenging machine design objectives.

-  Optimize precision and quality
-  Boost productivity
-  Maximize uptime
-  Reduce total cost of ownership
-  Meet demanding regulatory standards

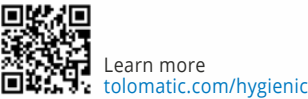
Combine your industry knowledge with Tolomatic’s expertise in linear motion to innovate together.

How we’ve helped engineers like you succeed...



Hygienic Solutions

Food and pharmaceutical producers are requiring cleaner, safer machine designs from their OEM machine builders. Learn more about the benefits of electric linear motion for clean, continuous control in hygienic applications.

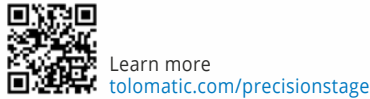


Learn more  
[tolomatic.com/hygienic](https://tolomatic.com/hygienic)



High Precision Solutions

When machine builders require linear motion that optimizes precision and rigidity in a compact machine footprint, the Twin Profile Rail Precision XY Stages (TRS) offer a unique design solution.



Learn more  
[tolomatic.com/precisionstage](https://tolomatic.com/precisionstage)



Servo Press Solutions

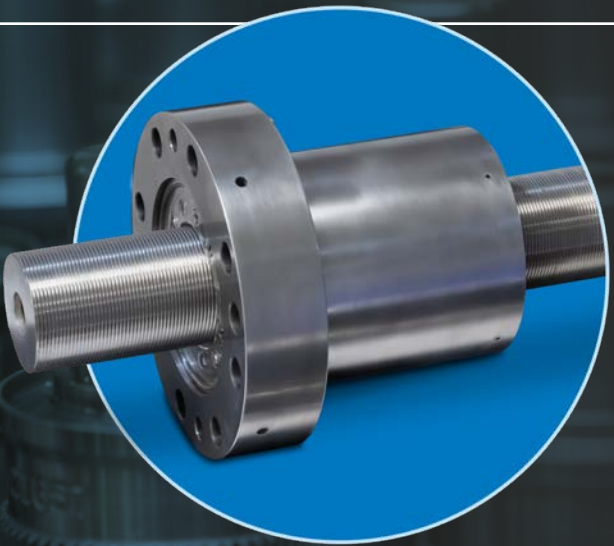
When manufacturers are looking to electrify linear motion in pressing applications with force capabilities that equal or surpass hydraulic systems, they can boost quality, productivity, and uptime.



Learn more  
[tolomatic.com/servopress](https://tolomatic.com/servopress)

CORE TECHNOLOGIES

For High-Duty Cycle Solutions When Motion Matters



Roller Screw Technology  
Engineered for Demanding Applications

Tolomatic is a leading innovator in roller screw technology. By controlling and optimizing the geometry, the material properties and the manufacturing processes, we produce roller screws that lead the industry in performance.

- Load capacity and life
- Positional accuracy and repeatability
- Rigidity and shock tolerance



Discover how roller screw actuators outperform other screw technologies.



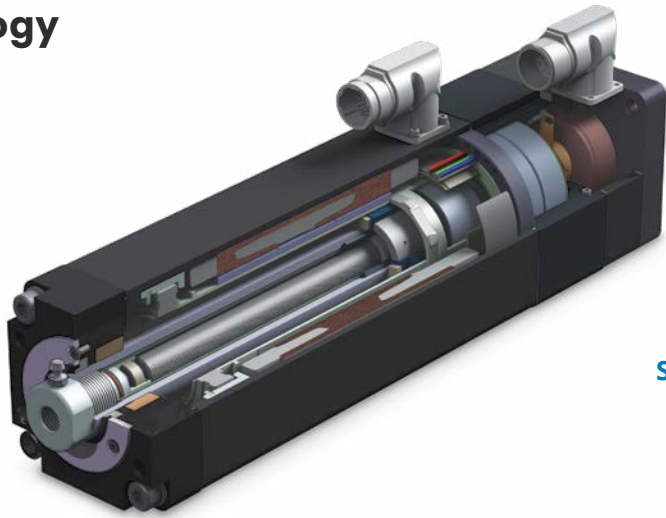
Learn more  
[tolomatic.com/roller-screw](https://tolomatic.com/roller-screw)

Servo Linear Actuator Technology  
Powerful, Responsive Performance

Servo Linear Actuators are compact and powerful combining motor and actuator into one unit.

The integrated design achieves:

- Reduced commissioning time and ongoing maintenance
- Space & weight efficient, compact designs
- Dynamic control and responsiveness
- Increased resistance to shock and vibration
- IP69K rating for wash-down environments
- Motor optimization for highest thrust



Explore the benefits of Servo Linear Actuators.



Learn more  
[tolomatic.com/servolinearactuators](https://tolomatic.com/servolinearactuators)



# ENGINEERED-TO-ORDER ACTUATOR DESIGNS

## Optimize Performance for Your Application

It's more cost-effective to generate an actuator design that's tailored to your application.

Tolomatic actuators are engineered-to-order, ensuring actuator solutions that fit your application:

- Motion requirements
- Mounting and physical fit
- Environmental protection
- Compatibility with controls
- Supply chain and project schedule



Standard	Modified	Custom
Proven, standard products with defined specifications and quick availability	Standard products adapted to meet specific application or integration requirements	Fully engineered solutions designed to meet unique performance, environment, and/or integration demands

## Proven Design Process Advances Productivity



*"We started developing our new CNC machines with some readily available actuators on the market ... But they weren't rigid enough to properly hold our tolerances, plus they allowed for particulate to ingress, causing problems. So we committed R&D to investigate solutions to these issues, and by working closely with Tolomatic, we developed an actuator that has the sealing and rigidity we needed."*



Learn more:  
[tolomatic.com/develop](https://tolomatic.com/develop)

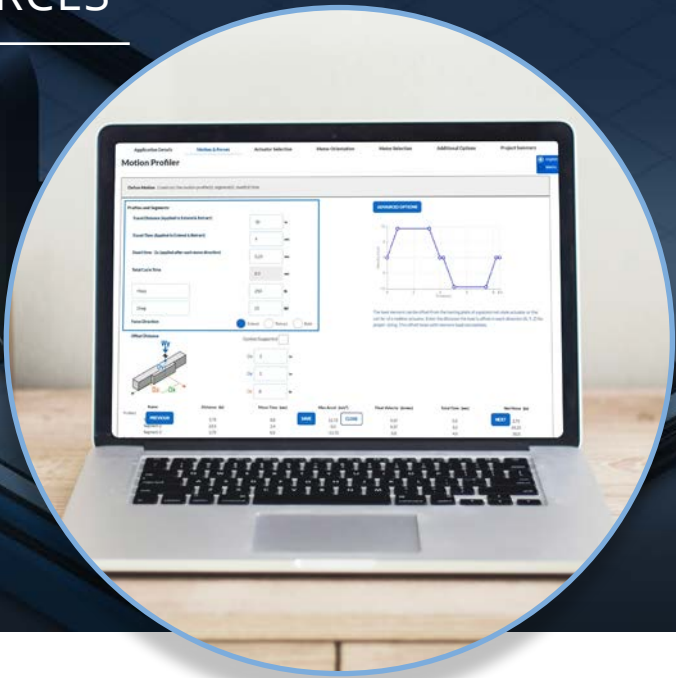
- DEMICHELE GROUP (DMG)  
CNC MACHINE OEM

# CONFIGURATION APPS & RESOURCES

Enabling Machine Designs to be More Efficient, Productive, Reliable, and Safe.



Get started:  
[tolomatic.com/tools](https://tolomatic.com/tools)

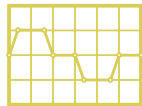


## Access tools via [tolomatic.com](https://tolomatic.com)



### Ask An Engineer

Get a question answered or request a virtual design consultation with one of our engineers



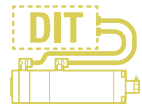
### Actuator Sizing

Simplify electric actuator selection with our online sizing tool



### Your Motor Here

Select the motor of your choice and your actuator ships with the appropriate mounting plates and couplers for quick and easy install



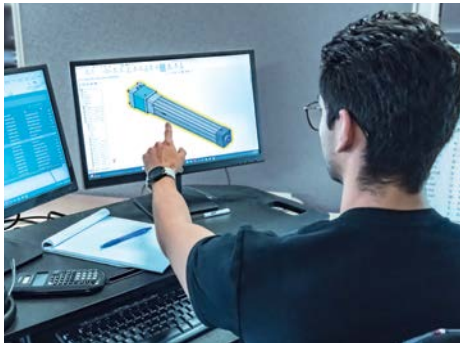
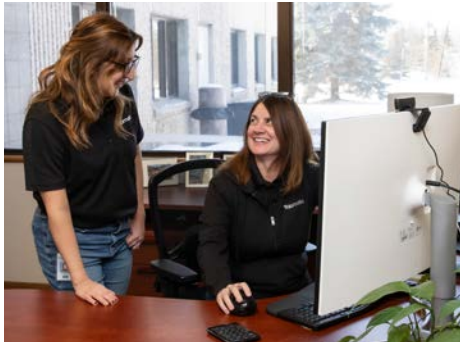
### Drive Integration Tool

Find the right drive and cable connection to complete your system



### CAD Library

Download 2D or 3D CAD files for Tolomatic products



# ELECTRIC ACTUATORS

## Rod-Style

High-performance rod-style electric linear actuators to fit a variety of applications, including RSH hygienic actuators featuring 316 stainless steel construction and IP69K rating.



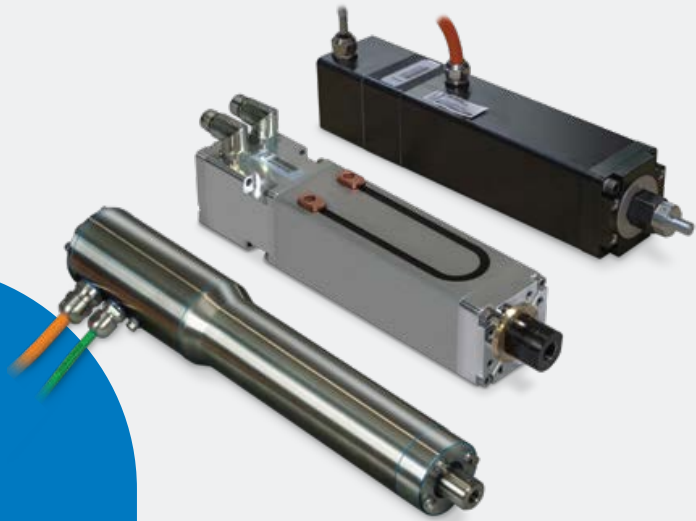
Learn more:  
[tolomatic.com/el-rod](https://tolomatic.com/el-rod)



# ELECTRIC ACTUATORS

## Rod-Style Integrated Motor

Servo Linear Actuators offer an integrated servo motor for a **compact, powerful, responsive** design. Available in standard and food-grade models with ball and roller screw selections for application flexibility.



Learn more:  
[tolomatic.com/sla](https://tolomatic.com/sla)



	ERD	RSH	RSA	RSX	GSA
	Electric Cylinder Linear Actuators	Hygienic Electric Linear Actuators	High Force Electric Linear Actuators	Extreme Force Electric Linear Actuators	Guided Electric Linear Actuators
Sizes/Models	10, 15, 20	22, 25, 30	12, 16, 24, 32, 50, 64	10, 15, 20, 25, 33, 50	12, 16, 24, 32
Max. Stroke	24 in (0.6 m)	48 in (1.2 m)	60 in (1.5 m)	59 in (1.5 m)	36 in (0.9 m)
Max. Speed	40 in/s (1.0 m/s)	20 in/s (0.5 m/s)	123 in/s (3.1 m/s)	30 in/s (0.8 m/s)	123 in/s (3.1 m/s)
Max. Force	500 lbf (2.2 kN)	7,900 lbf (35.1 kN)	13,000 lbf (58.0 kN)	100,000 lbf (445 kN)	4,100 lbf (18.0 kN)
IP Rating	IP40	IP69k	IP54	IP67	IP54
Housing	Stainless steel & aluminum	Stainless steel	Anodized aluminum	Anodized aluminum	Anodized aluminum
Thrust rod	Stainless steel	Stainless steel	Treated steel	Treated steel	Treated steel
Anti-rotate	Optional internal	Optional internal	Standard internal	Standard internal	Standard internal
Screw types	Ball, Acme	Ball, Roller	Ball, Acme, Roller	Roller	Ball, Acme
Options	Guided tooling plate, IP67, IP69k, rod ends	Caustic-resistant seals, rod ends	IP67, rod ends, mounting options	IP67, Oil cooled, rod ends, mounting opt.	Linear ball & composite bearing options

Your Motor Here® available for all actuators. Inline and reverse-parallel motor mounts available for all actuators  
Magnetically triggered limit switches available  
GSA can accommodate loads up to 1,200 lb (544 kg) and substantial side load



	IMA	IMAS	CSWX
	Servo Linear Actuators	Stainless Steel Servo Linear Actuators	ServoWeld® Integrated Servo Linear Actuators
Sizes/Models	22, 33, 44, 55	22, 33	3, 4
Max. Stroke	18 in (0.5 m)	18 in (0.5 m)	12 in (0.3 m)
Max. Speed	52 in/s (1.3 m/s)	20 in/s (0.5 m/s)	28 in/s (0.7 m/s)
Max. Force	8,000 lbf (35.6 kN)	2,500 lbf (11.1 kN)	4,950 lbf (22.0 kN)
IP Rating	IP65	IP69k	IP55
Housing	Anodized aluminum	Stainless steel	Anodized aluminum
Thrust rod	Treated steel	Stainless steel	Treated steel
Anti-rotate	Optional internal	Optional internal	Optional internal
Screw types	Ball, Roller	Ball, Roller	Roller
Options	IP67, feedback, connectors, cables, holding brake	Feedback, connectors, fasteners, cables, holding brake	Feedback, connectors, fasteners, cables, holding brake

Use the Drive Integration Tool to find the right drive and cable connection to complete your system



Commissioning just got easier with our Drive Integration Tool  
Learn more: [tolomatic.com/dit](https://tolomatic.com/dit)



## ELECTRIC ACTUATORS

# Rodless Screw-Drive

Rodless linear lead screw actuators with acme, ball, and roller screw configurations designed for high duty cycle applications. Features anodized aluminum design and reliable load stability with varied load and stroke length configurations available.



Learn more:  
[tolomatic.com/el-screw](https://tolomatic.com/el-screw)



## ELECTRIC ACTUATORS

# Rodless Belt-Drive

High speed linear belt driven actuators designed with stroke lengths up to 400 inches with optimal repeatability and high duty cycle performance in a variety of body sizes.



Learn more:  
[tolomatic.com/el-belt](https://tolomatic.com/el-belt)



	MXE-S	MXE-P	B3S	TRS
	Solid Bearing Carrier Rodless Linear Actuators	Profiled Bearing Carrier Rodless Linear Actuators	Recirculating Ball Bearing Carrier Linear Actuators	Twin Profile Rail Precision XY Stages
<b>Sizes/Models</b>	16, 25, 32, 40, 50, 63	16, 25, 32, 40, 50, 63	10, 15, 20	100, 165, 225
<b>Max. Stroke</b>	134 in (3.4 m)	134 in (3.4 m)	136 in (3.5 m)	87 in (2.2 m)
<b>Max. Speed</b>	60 in/s (1.5 m/s)	60 in/s (1.5 m/s)	60 in/s (1.5 m/s)	50 in/s (1.3 m/s)
<b>Max. Force</b>	4,300 lbf (19.1 kN)	4,300 lbf (19.1 kN)	2,700 lbf (12.0 kN)	2,830 lbf (12.6 kN)
<b>Max. Load*</b>	1,040 lb (472 kg)	2,580 lb (1,170 kg)	8,000 lb (3,640 kg)	4,320 lb (1,960 kg)
<b>IP Rating</b>	IP44	IP44	IP44	IP44
<b>Housing</b>	Anodized aluminum	Anodized aluminum	Anodized aluminum	Anodized aluminum
<b>Carrier Bearings</b>	Engineered resin	Profiled Rail	Recirculating ball bearing	Profiled Rail
<b>Options</b>	Auxiliary carrier, floating mount, tube clamps	Auxiliary carrier, tube clamps	Auxiliary carrier, dual 180 carrier, tube clamps	Auxiliary carrier, tube clamps

\*Maximum load with options

Your Motor Here® available for all actuators. Inline and reverse-parallel motor mounts available for all actuators

Magnetically triggered limit switches available



	MXB-U	MXB-S	MXB-P	B3W
	Unguided Carrier Rodless Linear Actuators	Solid Bearing Carrier Rodless Linear Actuators	Profiled Bearing Carrier Rodless Linear Actuators	Recirculating Ball Bearing Carrier Linear Actuators
<b>Sizes/Models</b>	16, 25, 32, 40, 50, 63	16, 25, 32, 40, 50, 63	16, 25, 32, 40, 50, 63	10,15,20
<b>Max. Stroke</b>	414 in (10.5 m)	414 in (10.5 m)	414 in (10.5 m)	470 in (11.9 m)
<b>Max. Speed</b>	200 in/s (5.1 m/s)	100 in/s (2.5 m/s)	150 in/s (3.8 m/s)	200 in/s (5.1 m/s)
<b>Max. Force</b>	418 lbf (1.9 kN)	418 lbf (1.9 kN)	418 lbf (1.9 kN)	325 lbf (1.4 kN)
<b>Max. Load*</b>	-	1,040 lb (472 kg)	2,580 lb (1,170 kg)	8,000 lb (3,640 kg)
<b>IP Rating</b>	-	-	-	IP44
<b>Housing</b>	Anodized aluminum	Anodized aluminum	Anodized aluminum	Anodized aluminum
<b>Carrier Bearings</b>	-	Engineered resin	Profiled Rail	Recirculating ball bearing
<b>Options</b>	Tube clamps	Auxiliary carrier, tube clamps	Auxiliary carrier, tube clamps	Auxiliary carrier, dual 180 carrier, tube clamps

\*Maximum load with options

Your Motor Here® available for all actuators. Inline and reverse-parallel motor mounts available for all actuators

Magnetically triggered limit switches available

# PNEUMATIC Rodless Band Cylinders

Rodless Pneumatic Band Cylinders provide optimal moment load control and a variety of options for a wide range of applications from opening CNC machine doors to positioning pallets of parts.

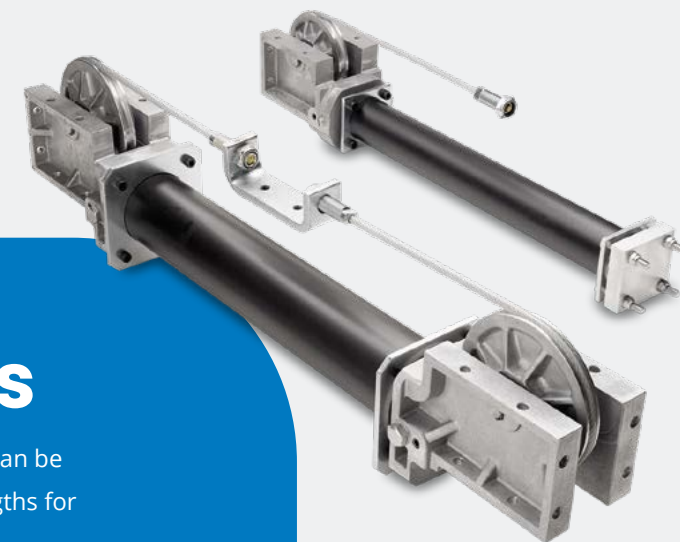


Learn more:  
[tolomatic.com/band-cyl](https://tolomatic.com/band-cyl)



# PNEUMATIC Cable Cylinders

Tolomatic cable cylinders – with pneumatic design – can be isolated from any work area with extended cable lengths for maximum application flexibility.



Learn more:  
[tolomatic.com/cc-sa](https://tolomatic.com/cc-sa)



	MXP-N	MXP-S	MXP-P	BC2	BC3
	Internal Bearing Carrier Band Cylinders	Solid Bearing Carrier Band Cylinders	Profiled Rail Bearing Carrier Band Cylinders	Solid Bearing Carrier Band Cylinders	Recirculating Ball Bearing Carrier Band Cylinders
<b>Sizes/Models</b>	16, 25, 32, 40, 50, 63	16, 25, 32, 40, 50, 63	16, 25, 32, 40, 50, 63	05, 10, 12, 15, 20, 25	10, 15, 20
<b>Max. Stroke</b>	206 in (5.2 m)	206 in (5.2 m)	206 in (5.2 m)	350 in (8.9 m)	205 in (5.2 m)
<b>Max. Press.</b>	100 PSI (6.9 bar)	100 PSI (6.9 bar)	100 PSI (6.9 bar)	100 PSI (6.9 bar)	100 PSI (6.9 bar)
<b>Max. Force</b>	490 lbf (2.2 kN)	490 lbf (2.2 kN)	490 lbf (2.2 kN)	490 lbf (2.2 kN)	310 lbf (1.4 kN)
<b>Max. Load*</b>	740 lb (336 kg)	1,040 lb (472 kg)	2,580 lb (1,170 kg)	800 lb (362 kg)	8,000 lb (3,640 kg)
<b>Housing</b>	Anodized aluminum	Anodized aluminum	Anodized aluminum	Anodized aluminum	Anodized aluminum
<b>Carrier Bearings</b>	Engineered resin	Engineered resin	Profiled Rail	Engineered resin	Recirculating ball bearing
<b>Options</b>	Auxiliary carrier, tube clamps	Auxiliary carrier, floating mount, tube clamps	Auxiliary carrier, tube clamps	IP67, Oil cooled, rod ends, mounting opt.	IP67, rod ends, mounting options

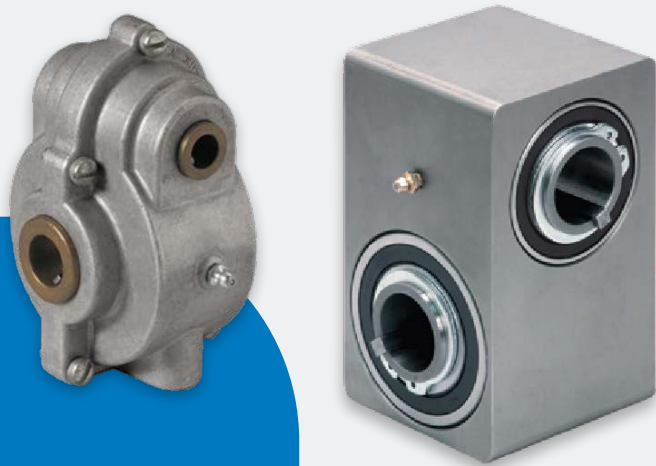
\*Maximum load with options

Magnetically triggered limit switches available



	CC	SA
	Double-Acting Pneumatic Cable Cylinders	Single-Acting Pneumatic Cable Cylinders
<b>Sizes/Models</b>	05, 07, 10, 15, 20, 25, 30, 40, 50, 52	07, 10, 15, 20, 25, 30, 40, 50, 52
<b>Max. Stroke</b>	282 in (7.2 m)	282 in (7.2 m)
<b>Max. Press.</b>	200 PSI (13.8 bar)	200 PSI (13.8 bar)
<b>Max. Force</b>	1,920 lbf (8.5 kN)	1,920 lbf (8.5 kN)
<b>Housing</b>	Anodized aluminum	Anodized aluminum
<b>Options</b>	Automatic tensioner, 3 ported head, steel tube	Automatic tensioner, 3 ported head, steel tube

Magnetically triggered limit switches available

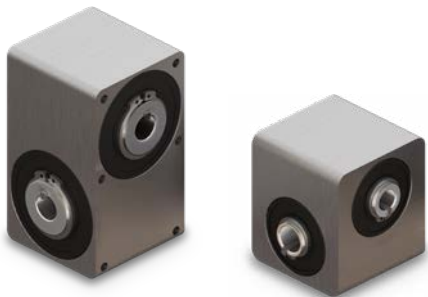



POWER TRANSMISSION

# Right Angle Gearboxes

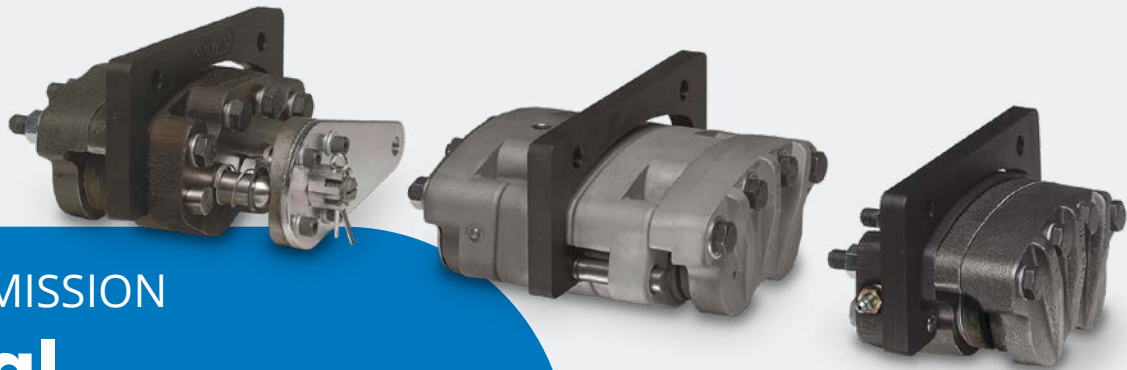
Industrial right angle gearbox designs that can turn power around any corner.

Learn more:  
[tolomatic.com/gearbox](https://tolomatic.com/gearbox)



Slide-Rite Gearbox	Ratio	No. of Models
Compact	1:1	12
Compact CR	1:1	6
Standard	1:1	24
Standard	3:2, 2:1	12, 18
Standard-CR	1:1	12
Designed to slide along the shaft		
One-piece housing, geared sleeve and sealed bearings eliminate leakage		
Shaft speeds up to 1,200 RPM		
Pre-lubricated and ready for installation		
Multiple bore sizes in US Standard & metric		

Float-A-Shaft Gearbox	Ratio	No. of Models
Compact	1:1	18
Compact Foot Mount	1:1	18
Standard	1:1, 3:2, 2:1	44, 22, 36
Standard Flat Base	1:1, 3:2, 2:1	44, 22, 24
Standard	2.5:1	12
Designed to slide along the shaft		
Die-cast aluminum gear-case, hardened steel gears		
Shaft speeds up to 500 RPM		
Low or high torque bearings		
Multiple bore sizes in US Standard & metric		




POWER TRANSMISSION

# Industrial Caliper Disc Brakes

Industrial caliper brakes in both single and double acting models: pneumatic, hydraulic, mechanical, combination hydraulic/mechanical, and spring applied.

Learn more:  
[tolomatic.com/brakes](https://tolomatic.com/brakes)



	Pneumatic	Hydraulic	Hydraulic/Mechanical	Mechanical	Spring Applied
No. of Models	36	109	24	36	38
*Max. Dynamic Torque	2,080 in-lbs (235 Nm)	66,400 in-lbs (7,500 Nm)	10,000 in-lbs (1,130 Nm)	35,500 in-lbs (4,000 Nm)	-
*Max. Static Torque	1,040 in-lbs (120 Nm)	38,800 in-lbs (4,380 Nm)	5,010 in-lbs (570 Nm)	33,700 in-lbs (3,810 Nm)	62,100 in-lbs (7,020 Nm)
Features	Double acting or single acting Aluminum construction with zinc plated bolts, Buna-N seals	Double acting or single acting Aluminum or cast iron construction with zinc plated bolts, bleeder screws, Buna-N seals	Single acting Aluminum construction with zinc plated bolts	Single acting Aluminum or cast iron construction with zinc plated bolts	Single acting with Belleville® spring washers Aluminum or cast iron construction with zinc plated bolts, bleeder screws, Buna-N seals Braking is applied when hydraulic pressure is released
	Replaceable, high-grade friction material				
Options	EPR seals, Viton® seals	EPR seals, Viton® seals	EPR seals, Viton® seals	Choice of lever length	EPR seals
	Retractable pistons, floating bracket	Retractable pistons, floating bracket	Retractable pistons, floating bracket	Floating bracket	Manual lining wear compensators

\*based on 16 in (406 mm) disc



**The Trusted Partner  
When Motion Matters**

# Tolomatic™



**Explore What Customers Say About Working With  
Tolomatic – *The Trusted Partner When Motion Matters***

**Engineering Collaboration  
Core Technologies  
Online Tools  
and more**



Learn more:  
[tolomatic.com/partnership](https://tolomatic.com/partnership)

**USA – Headquarters**

**Tolomatic, Inc.**  
Hamel MN 55340 USA  
763-478-8000  
1-800-328-2174  
[sales@tolomatic.com](mailto:sales@tolomatic.com)

[tolomatic.com](https://tolomatic.com)

**MÉXICO**

**Service Center**  
Querétaro, México  
+1 (763) 478-8000  
[help@tolomatic.com](mailto:help@tolomatic.com)

**EUROPE**

**Tolomatic Europe GmbH**  
Rüsselsheim, Germany  
+49 6142 17604-0  
[help@tolomatic.eu](mailto:help@tolomatic.eu)

[tolomatic.com/de](https://tolomatic.com/de)

**CHINA**

**Tolomatic Automation Products  
(Suzhou) Co. Ltd.**  
Suzhou, Jiangsu, China  
+86 512 6750 8506  
[TolomaticChina@tolomatic.com](mailto:TolomaticChina@tolomatic.com)

[tolomatic.cn](https://tolomatic.cn)

©2026. All brand and product names are trademarks of their respective owners. Information in this document is believed accurate at time of printing. However, Tolomatic assumes no responsibility for its use or for any errors that may appear in this document. Tolomatic reserves the right to change the design or operation of the equipment described herein and any associated motion products without notice. Information in this document is subject to change without notice.

Visit [www.tolomatic.com](https://www.tolomatic.com) for the most up-to-date technical information.

202601231624

9900-9251\_21