

## Engineering Design Tools Online

### ELECTRIC LINEAR ACTUATORS EBOOK

The essential handbook for understanding the nuances of linear motion and electric actuators.



[Info.Tolomatic.com/ebook](http://Info.Tolomatic.com/ebook)



### ASK AN ENGINEER

Expert advice for your linear motion challenges.



[Tolomatic.com/ask](http://Tolomatic.com/ask)

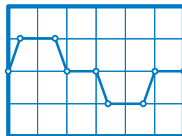


### SIZE YOUR ACTUATOR

Size and select electric actuators with easy-to-use online software.



[Sizeit.Tolomatic.com](http://Sizeit.Tolomatic.com)



### MODEL YOUR MOTION SOLUTION

Download solid models in popular CAD software formats.



[Tolomatic.com/CAD](http://Tolomatic.com/CAD)



**Tolomatic**<sup>TM</sup>  
EXCELLENCE *IN MOTION*

[www.tolomatic.com](http://www.tolomatic.com) • 1-800-328-2174

9900-4111\_02

©2024 Tolomatic

**Tolomatic**<sup>TM</sup>  
EXCELLENCE *IN MOTION*

## Electric Actuator Experts



Clean

NO AIR • NO OIL • NO LEAKS

Continuous

24 X 7 RELIABILITY FOR HIGH DUTY CYCLE

Control

IMPROVED EFFICIENCY, QUALITY, AND YIELD

## ELECTRIC ROD-STYLE LINEAR ACTUATORS

**ERD** Economical Electric Cylinders for Pneumatic Replacement



[tolomatic.com/erd](http://tolomatic.com/erd)

**RSH** Hygienic Electric Rod Style Actuators



**NEW**

[tolomatic.com/rsh](http://tolomatic.com/rsh)

**RSA** Heavy Duty, High Force Electric Rod Actuators



[tolomatic.com/rsa-ht](http://tolomatic.com/rsa-ht)

**RSX** Extreme Force Electric Linear Actuators



**NEW**

[tolomatic.com/rsx](http://tolomatic.com/rsx)

**GSA** Linear Slide Actuators



[tolomatic.com/gsa](http://tolomatic.com/gsa)

**IMA** Linear Servo Actuators



[tolomatic.com/ima](http://tolomatic.com/ima)

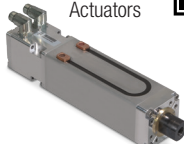
**IMA-S** Hygienic Integrated Stainless Steel Servo Actuators



**NEW**

[tolomatic.com/ima-s](http://tolomatic.com/ima-s)

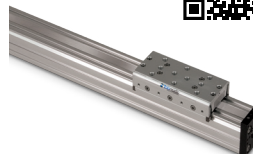
**CSWX** Compact ServoWeld® Integrated Servo Spot Welding Actuators



[tolomatic.com/cswx](http://tolomatic.com/cswx)

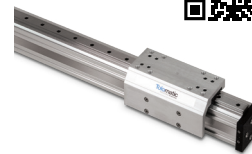
## ELECTRIC RODLESS LINEAR ACTUATORS

**MXE-S** Screw Drive Actuators



[tolomatic.com/mxe-s](http://tolomatic.com/mxe-s)

**MXE-P** Screw Driven Actuators



[tolomatic.com/mxe-p](http://tolomatic.com/mxe-p)

**B3S** Ball Screw Linear Actuators



[tolomatic.com/b3s](http://tolomatic.com/b3s)

**TRS** Twin Profile Rail Stage with Enclosed Design



**NEW**

[tolomatic.com/trs](http://tolomatic.com/trs)

**MXB-U** Unguided Belt Driven Actuators



[tolomatic.com/mxb-u](http://tolomatic.com/mxb-u)

**MXB-S** Linear Belt Drive Actuator



[tolomatic.com/mxb-s](http://tolomatic.com/mxb-s)

**MXB-P** Heavy Duty Linear Actuator



[tolomatic.com/mxb-p](http://tolomatic.com/mxb-p)

**B3W** Linear Belt-Drive Actuators



[tolomatic.com/b3w](http://tolomatic.com/b3w)

**Tolomatic**<sup>™</sup>

[www.tolomatic.com](http://www.tolomatic.com) • 1-800-328-2174