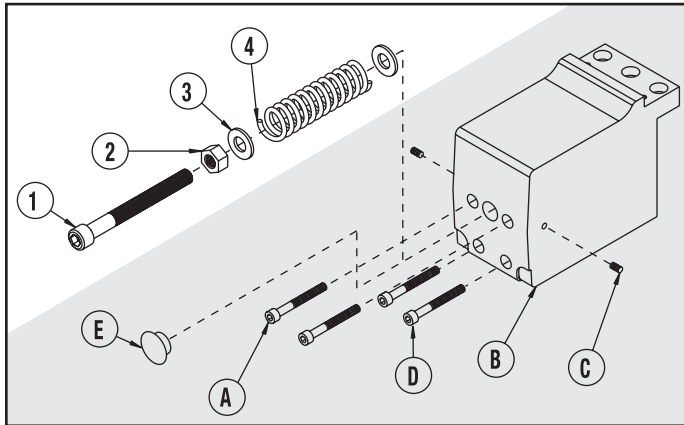


### Belt-Tension Kit

3410-0819 & 3415-0838



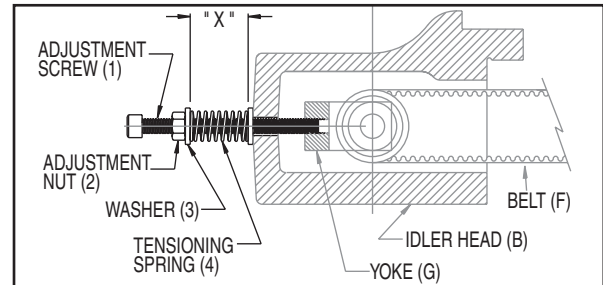
\*NOTE: Kits include items 1-4 only. Parts are not sold individually.  
 Grey items are not included in these kits.  
 These products should be on existing drives.

#### List of Parts

Item	Part No.	Description	3410-0819	3415-0838
	<b>34159253</b>	<b>B3B kit (items 1-4)</b>	<b>X</b>	<b>X</b>
1	34152008	Adjustment Screw	1	1
2	30001009	Adjustment Nut	1	1
3	24101135	Washer	2	2
4	34152007	Spring	1	1
A.	1408-3412	SHCS, #10-24 x 1.50		
B.	3420-1401	Head Idler, B3B20		
C.	0905-1077	Set Screw, #6-32 x .50, cone		
D.	6000-1473	SHCS, #10-24 x 1.38		
E.	3420-1431	Button Plug		
F.	3420-1421	Belt, 5mm pitch, 1.25" wide, neoprene		
G.	3420-1411	Yoke, B3B20		

**DISCONTINUED PRODUCT STYLE OR SIZE. PARTS SHEET IS FOR REPAIR INSTRUCTIONS ONLY.**

Parts listing is for reference only. All parts listed are limited to stock on hand. Contact Tolomatic regarding availability.



#### ADJUSTING BELT TENSION USING THE BELT TENSION KIT

To adjust belt tension using the Belt Tension Kit, follow these instructions.

- Remove the band clamp from the idler head and roll the band backwards so that the drive belt can be observed while tensioning the belt. Remove the Cap Plug (E).
- Attach Belt Tension Kit
  - Thread the adjusting nut (2) onto the adjusting screw (1) all the way to the end of the threads on the adjusting screw.
  - Place the washer (3), spring (4), and second washer (3) onto the adjusting screw (1).
  - Insert the adjusting screw into the idler housing (B) and thread the adjusting screw (1) into the yoke about 4 turns.  
 \*Caution: Threading adjustment screw in too far may cause belt damage.
- Apply Tension To The Belt
  - While holding the adjusting screw (1) so that it doesn't turn, turn adjusting nut (2) until dimension "X" between the inside of the 2 washers is achieved. (Dim. "X" is shown in the adjustment table below.)
- Lock Yoke Into Position
  - Insert one yoke positioning socket head cap screw (A) thru the rear of the idler head (B) and thread into the yoke (G). While viewing the belt thru the top opening, near the idler head, turn the screw into the yoke slowly until the belt (F) moves just slightly to the side. Repeat the process for the second yoke positioning screw.
  - Screw the 2 set screws (C) into the side of the idler head (B) to lock the yoke (G), positioning the screws into place.  
 The belt is now properly tensioned. Remove the belt tension kit and insert the cap plug (E) into the back of the idler head.

ADJUSTMENT TABLE	
"X" Dimension (inches)	
3410-0819.....	1.70
3415-0838.....	1.70