

RODLESS SCREW-DRIVE ELECTRIC ACTUATOR B3S

With large bending moment capacity, the B3S utilizes an integral recirculating ball bearing guidance system that provides durable performance and extremely long life.



MULTIPLE SCREW TECHNOLOGIES
YOU CAN CHOOSE:

- Solid nuts of bronze or engineered resins offer quiet performance at the lowest cost; anti-backlash available
- Ball screws offer positioning accuracy and repeatability with longer life; low-backlash available

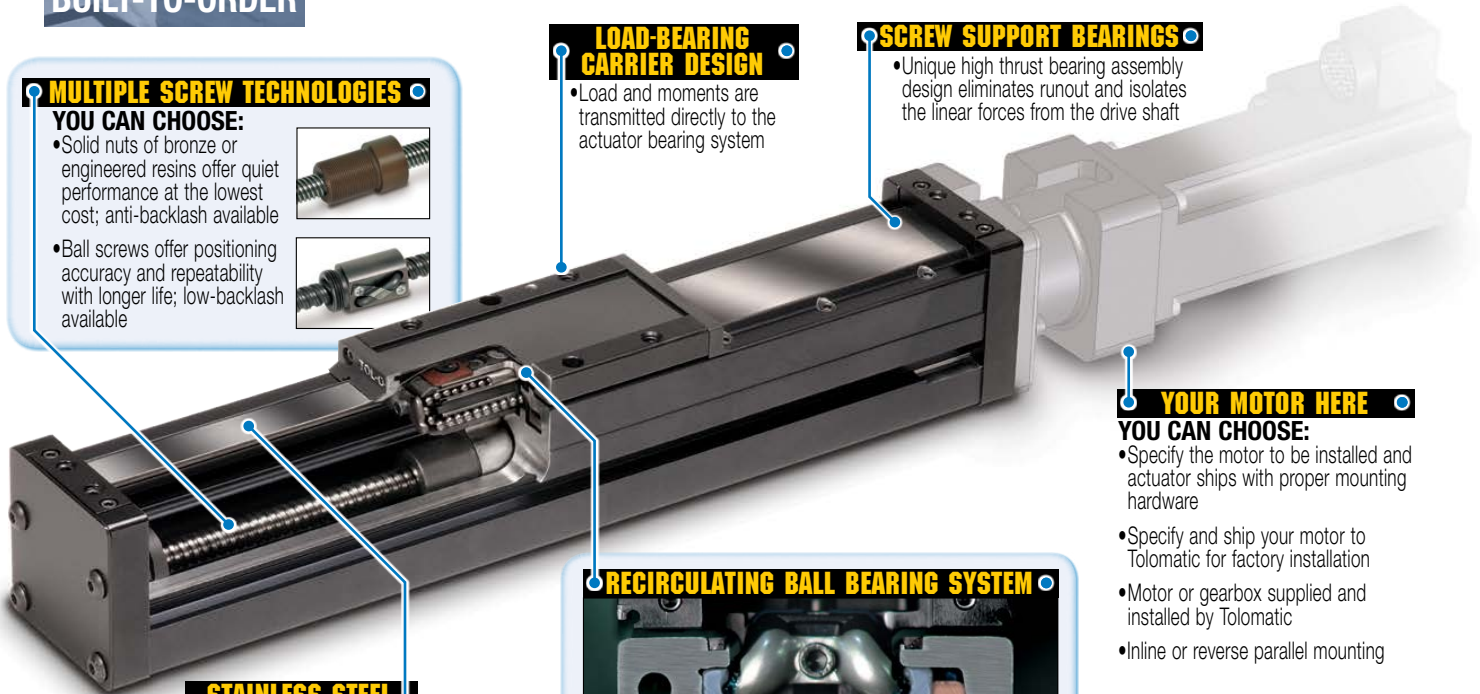


LOAD-BEARING CARRIER DESIGN

- Load and moments are transmitted directly to the actuator bearing system

SCREW SUPPORT BEARINGS

- Unique high thrust bearing assembly design eliminates runout and isolates the linear forces from the drive shaft



YOUR MOTOR HERE
YOU CAN CHOOSE:

- Specify the motor to be installed and actuator ships with proper mounting hardware
- Specify and ship your motor to Tolomatic for factory installation
- Motor or gearbox supplied and installed by Tolomatic
- Inline or reverse parallel mounting

STAINLESS STEEL SEALING BAND

- IP44 protection prevents contaminants from entering the screw and nut area for extended performance

RECIRCULATING BALL BEARING SYSTEM

- Unique design incorporates hardened steel raceways integral to the aluminum extrusion providing optimum preload and smooth performance
- Recirculating ball bearing system provides guidance, high efficiency and durability



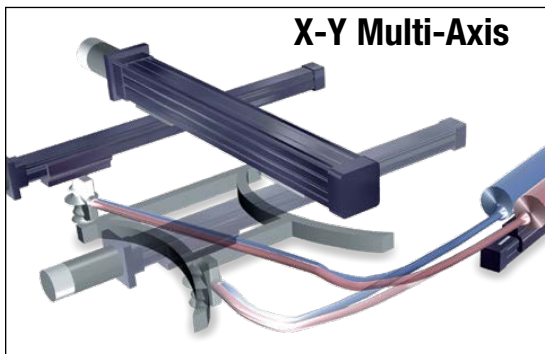
Available Options:

Carrier Options
Auxiliary Carrier; Dual 180° Carrier

Mounting Options
Surface Mount; Tube Supports; Mounting Plates

Metric Option
Provides metric tapped holes

Sensors
With integrated mounting bracket



Applications:

- Adhesive dispensing
- Aligning
- Animation
- Assembly
- Automotive
- Camera positioning
- Conveyors
- Cutting
- Diverters
- Inspection
- Laser marking
- Material cutting
- Milling
- Packaging equipment
- Parts transfer
- Pick & place
- Positioning
- Product handling
- Slitting
- Sorting
- Spraying
- Stacking
- Table positioning
- Test stations
- Wire winding

RODLESS SCREW-DRIVE ELECTRIC ACTUATOR

SPECIFICATIONS

CARRIER	SIZE	MAXIMUM BENDING MOMENTS						MAX. LOAD				MAX. THRUST			
		M _x		M _y		M _z		F _y		F _z		Solid Nut		Ball Screw	
		N-m	in-lbs	N-m	in-lbs	N-m	in-lbs	N	lb	N	lb	N	lbf	N	lbf
Standard	10	28.2	250	30.4	269	17.6	156	1517	341	2629	591	800	170	800	130
	15	97	859	117	1033	67	596	3737	840	6468	1454	1400	300	7300	800
	20	188	1662	166	1472	96	850	5155	1159	8932	2008	1400	300	11700	2700
Dual 180°	10	74	657	35.3	312	61	538	5258	1182	3034	682	800	170	800	130
	15	279	2468	135	1192	233	2066	12935	2908	7473	1680	1400	300	7300	800
	20	512	4527	192	1700	333	2944	17864	4016	10311	2318	1400	300	11700	2700

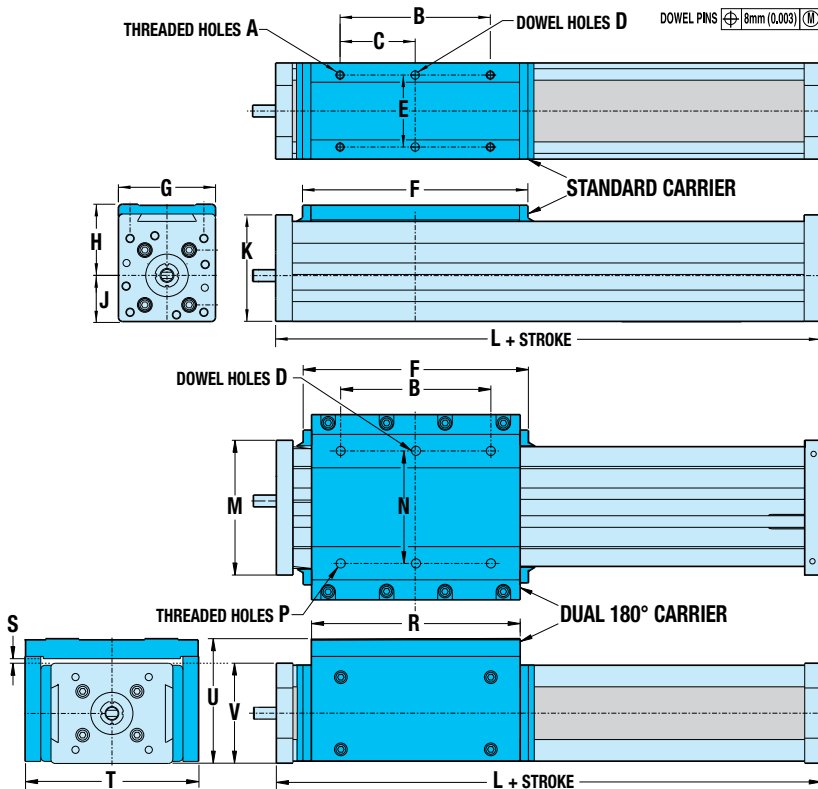
NOTE: Auxiliary Carrier option increases maximum bending moments and load, see B3 brochure 3600-4176 for complete details.

B3S



**FAST DELIVERY
BUILT-TO-ORDER**

Dimensions



	10	15	20
A	M6-1.0 9.4 DP	M6-1.0 10.2 DP	M8-1.25 14.2 DP
B	57.15	114.3	120.65
C	28.58	57.15	60.33
D	6.045/ 6.4 DP	6.045/ 6.4 DP	6.045/ 6.4 DP
E	45.24	54.76	79.30
F	103.6	171.5	184.1
G	57.2	73.0	107.9
H	39.1	53.4	67.5
J	20.6	34.7	45.2
K	56.4	80.8	106.6
L	142.8	213.8	267.2
L*	193.6	-	-
M	72.9	102.6	133.4
N	61.90	85.73	130.18
P	M6-1.0 THRU	M8-1.25 THRU	M10-1.5 THRU
R	93.2	158.5	171.5
S	3.6	3.6	3.2
T	109.5	152.4	188.2
U	71.8	94.9	122.7
V	57.2	76.2	108.0

Dimensions in millimeters
For reference only. Use CAD files for
any critical dimensions
* = L Maximum



USA

3800 County Road 116
Hamel, MN 55340, USA
Phone: (763) 478-8000
Fax: (763) 478-8080
Toll-Free: **1-800-328-2174**
sales@tolomatic.com
www.tolomatic.com

CHINA

**Tolomatic Automation Products
(Suzhou) Co. Ltd.**
(ServoWeld® inquiries only)
No. 60 Chuangye Street, Building 2
Huqiu District, SND Suzhou
Jiangsu 215011 - P.R. China
Phone: +86 (512) 6750-8506
Fax: +86 (512) 6750-8507
ServoWeldChina@tolomatic.com

EUROPE

Tolomatic Europe GmbH
Elisabethenstr. 20
65428 Rüsselsheim
Germany
Phone: +49 6142 17604-0
help@tolomatic.eu

COMPANY WITH
QUALITY SYSTEM
CERTIFIED BY DNV GL
= ISO 9001 =
Certified site: Hamel, MN

All brand and product names are trademarks or registered trademarks of their respective owners. Information in this document is believed accurate at time of printing. However, Tolomatic assumes no responsibility for its use or for any errors that may

appear in this document. Tolomatic reserves the right to change the design or operation of the equipment described herein and any associated motion products without notice. Information in this document is subject to change without notice.

Visit www.tolomatic.com for the most up-to-date technical information