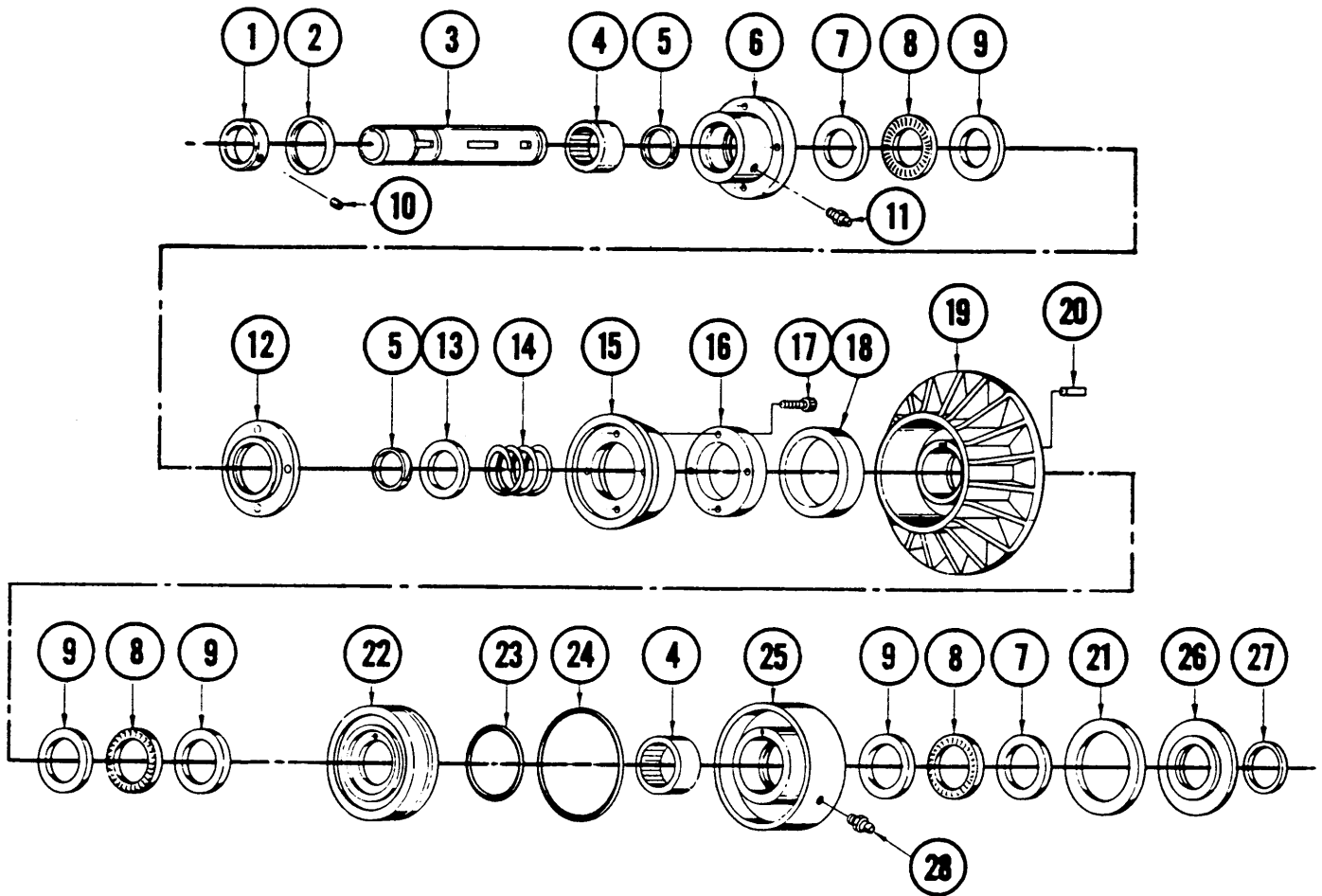


1208D Disc/Cone Clutch



Parts Listing			Quantity		
			1208-0010	1208-0012	1208-0014
ITEM	PART NO.	DESCRIPTION			
1	1308-1008	Collar			1
2	2410-1096	Internal Retaining Ring	1	1	1
3	1208-1020	Shaft, 5/8" Bore	1		
	1208-1022	Shaft, 3/4" Bore		1	
	1208-1024	Shaft, 7/8" Bore			1
4	1308-1017	Roller Bearing	2	2	2
5	1001-1044	Retaining Ring	2	2	2
6	1208-1012	Adapter	1	1	1
7	1308-2019	Thrust Race Bearing	2	2	2
8	0200-1220	Thrust Bearing	3	3	3
9	0200-1336	Thrust Race Screw	4	4	4
10	1308-1013	Set Screw	2	2	2
11	2006-1056	Grease Fitting	1	1	1
12	1208-1002	Cone Adapter	1	1	1
13	1208-1008	Washer	1	1	1
14	1308-1069	Spring	1	1	1

			Quantity		
			1208-0010	1208-0012	1208-0014
ITEM	PART NO.	DESCRIPTION			
15	1208-1003	Cone	1	1	1
16	1208-1009	Ring Adapter	1	1	1
17	0707-1010	Soc. Hd. Cap Screw	4	4	4
18	1208-1011	Felt Seal	2	2	2
19	1208-1004	Cup	1	1	1
20	1308-1009	Key	1	1	1
21	1208-1010	Felt Seal	1	1	1
22	1208-1005	Piston	1	1	1
23	1208-1014	O-Ring Seal	1	1	1
24	1208-1015	O-Ring Seal	1	1	1
25	1208-1006	Cylinder	1	1	1
26	1208-1007	Seal Adapter	1	1	1
27	1208-1060	External Retaining Ring	2	2	2
28	0100-1601	Grease Fitting	1	1	1

Installation

The Tolomatic Disc/Cone Clutch is as simple to install as a sprocket or sheave.

Simply slip the clutch over the shaft to the desired position, align with keyway and insert key. After final alignment with mating sprocket or sheave, tighten set screws to lock clutch in place.

Connect air or hydraulic source (not over 100 psi pressure) to cylinder port. Make sure no side or end thrust is transmitted to clutch. Flexible hose (not plastic tubing) may be used. A restraining member may be necessary to prevent cylinder rotation.

Maintenance

Lubrication will be required after every 4 weeks of operation. Use a lubricant such as Mobilith® SHC 460 or equivalent. Two zerk fittings are provided for this purpose.

After long periods of operation, it may be necessary to disassemble the clutch for cleaning and inspection.

CAUTION: CLUTCHES ARE UNDER SPRING TENSION. USE CARE WHEN DIS-ASSEMBLING.

To disassemble, remove the retaining rings from the cylinder end of the clutch shaft and slide all parts off this end. Assemble all parts onto the shaft from the opposite end. This procedure is necessary to keep from damaging the edges of the bearing seal lips. See exploded view on the other side for proper sequence of assembly.

Wipe off all old lubricant before applying fresh grease. Use Mobilith® SHC 460 or equivalent. If it is necessary to remove the piston from the cylinder, re-lubricate the O-rings with a mineral base O-ring grease.

Remove any grease that may have contacted the cone and clean out any foreign material in the cup. Be careful not to re-contaminate any internal parts.

If these simple procedures are followed, your Tolomatic Disc/Cone Clutch will give you years of trouble-free service.

Mobilith® SHC 460 is a registered trademark of Exxon Mobil Corporation, www.mobil.com

Tolomatic[™]
EXCELLENCE *IN MOTION*

3800 County Road 116, Hamel, MN 55340 USA
<http://www.Tolomatic.com> • Email: Help@Tolomatic.com
Phone: (763) 478-8000 • Fax: (763) 478-8080 • Toll Free: 1-800-328-2174

COMPANY WITH
QUALITY SYSTEM
CERTIFIED BY DNV GL
= ISO 9001 =

All brand and product names are trademarks or registered trademarks of their respective owners. Information in this document is believed accurate at time of printing. However, Tolomatic assumes no responsibility for its use or for any errors that may appear in this document. Tolomatic reserves the right to change the design or operation of the equipment described herein and any associated motion products without notice. Information in this document is subject to change without notice.