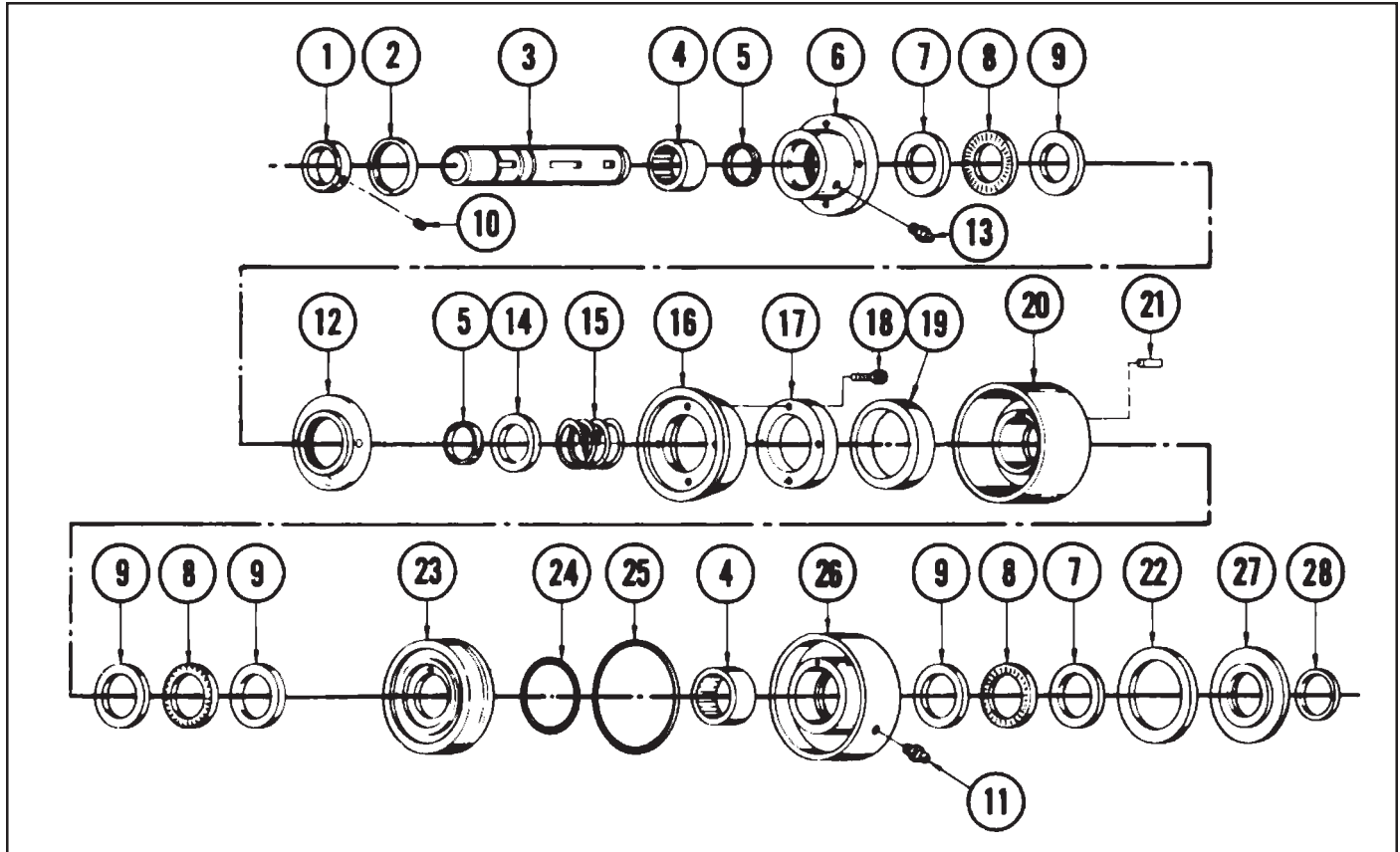




Disc/Cone Clutch

1307D



List of Parts

Item	Part No.	Description	Qty. for Model No. 1307-0308	Qty. for Model No. 1307-031	Item	Part No.	Description	Qty. for Model No. 1307-0308	Qty. for Model No. 1307-0310
1.	1307-1008	Collar, Shaft		1	15.	1207-1033	Spring	1	1
2.	1207-1016	Ring, Retaining	1	1	16.	1207-1003	Cone	1	1
3.	1207-1018	Shaft, 1/2" Bore	1		17.	1207-1009	Adapter, Ring	1	1
	1207-1019	Shaft, 5/8" Bore		1	18.	1307-2018	Screw, Soc. Hd. Cap.	4	4
4.	1307-1015	Bearing, Roller	2	2	19.	1207-1011	Seal, Felt	2	2
5.	1307-1013	Ring, Retaining	2	2	20.	1307-2028	Cup	1	1
6.	1207-1012	Adapter	1	1	21.	1300-1012	Key	1	1
7.	1307-1009	Race, Bearing	2	2	22.	1207-1010	Seal, Felt	1	1
8.	0200-1214	Bearing, Thrust	3	3	23.	1207-1005	Piston	1	1
9.	1307-2009	Race, Bearing	4	4	24.	0720-1004	Seal, O-Ring	1	1
10.	1301-1174	Screw, Set	2	2	25.	1207-1014	Seal, O-Ring	1	1
11.	0100-1601	Grease Fitting	1	1	26.	1207-1006	Cylinder	1	1
12.	1207-1002	Adapter, Cone	1	1	27.	1207-1007	Adapter, Seal	1	1
13.	1208-1034	Grease Fitting	1	1	28.	1207-1060	Ring, Retaining	2	2
14.	1207-1008	Washer	1	1					

The Tol-O-Matic Disc/Cone Clutch is as simple to install as a sprocket or sheave.

Simply slip the clutch over the shaft to the desired position, align with keyway and insert key. After final alignment with mating sprocket or sheave, tighten set screws to lock clutch in place.

Connect air or hydraulic source (not over 100 psi pressure) to cylinder port. Make sure no side or end thrust is transmitted to clutch. Flexible hose (**not plastic tubing**) may be used. A restraining member may be necessary to prevent cylinder rotation.

Lubrication will be required after every 4 weeks of operation. Use a lubricant such as ORE-LUBE G-1/3.* Two zerk fittings are provided for this purpose.

After long periods of operation, it may be necessary to disassemble the clutch for cleaning and inspection.

CAUTION: CLUTCHES ARE UNDER SPRING TENSION. USE CARE WHEN DIS-ASSEMBLING.

To disassemble, remove the retaining rings from the cylinder end of the clutch shaft and slide all parts off this end. Assemble all parts onto the shaft from the opposite end. This procedure is necessary to keep from damaging the edges of the bearing seal lips. See exploded view on the other side for proper sequence of assembly.

Wipe off all old lubricant before applying fresh grease. Use Ore-Lube G-1/3 or similar. If it is necessary to remove the piston from the cylinder, re-lubricate the O-rings with a mineral base O-ring grease.

Remove any grease that may have contacted the cone and clean out any foreign material in the cup. Be careful not to re-contaminate any internal parts.

If these simple procedures are followed, your Tol-O-Matic Disc/Cone Clutch will give you years of trouble-free service.

ORE-Lube is a trademark of ORE-Lube Midwest Corp., 2480 S. Highway 100, Minneapolis, Minnesota 55416



TOL-O-MATIC, INC.

3800 County Road 116, Hamel, MN 55340
<http://www.Tolomatic.com> • Email: Help@Tolomatic.com
 Phone: (763) 478-8000 • Fax: (763) 478-8080 • Toll Free: 1-800-328-2174



Information furnished is believed to be accurate and reliable. However, Tol-O-Matic assumes no responsibility for its use or for any errors that may appear in this document. Tol-O-Matic reserves the right to change the design or operation of the equipment described herein and any associated motion products without notice. Information in this document is subject to change without notice.