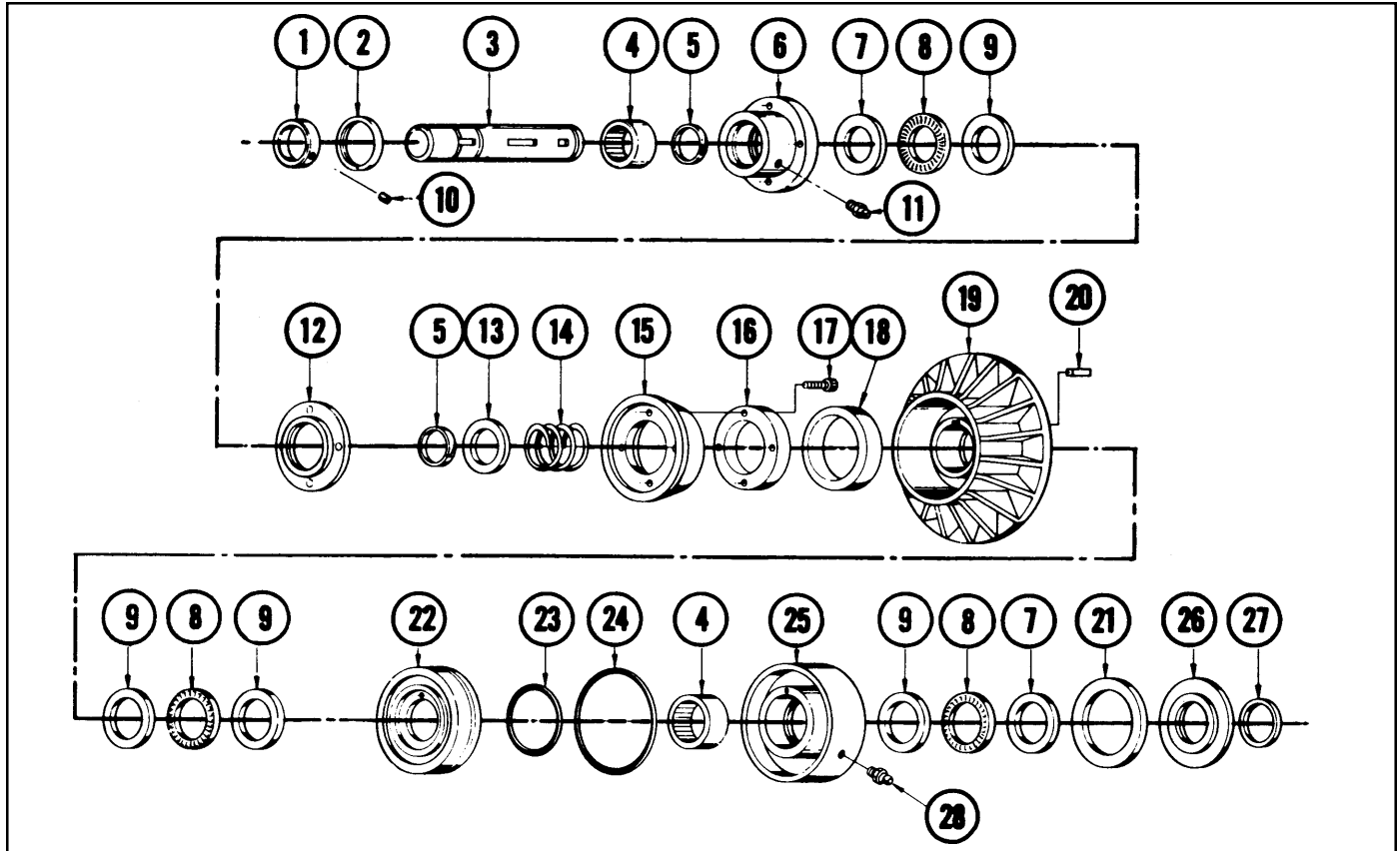




1207D Disc/Cone Clutch

Models: 1207-0008
1207-0010



Parts List

Item	Part No.	Description	MODELS	
			1207-0008	1207-0010
1.	1307-1008	Shaft Collar		1
2.	1207-1016	Retaining Ring	1	1
3.	1207-1018	Shaft, 1/2" Bore	1	
	1207-1019	Shaft, 5/8" Bore		1
4.	1307-1015	Roller Bearing	2	2
5.	1307-1013	Retaining Ring	2	2
6.	1207-1012	Adapter	1	1
7.	1307-1009	Bearing Race	2	2
8.	0200-1214	Thrust Bearing	3	3
9.	1307-2009	Bearing Race	4	4
10.	1301-1174	Set Screw	2	2
11.	1208-1034	Grease Fitting	1	1
12.	1207-1002	Cone Adapter	1	1
13.	1207-1008	Washer	1	1
14.	1207-1033	Spring	1	1

Item	Part No.	Description	MODELS	
			1207-0008	1207-0010
15.	1207-1003	Cone	1	1
16.	1207-1009	Adapter Ring	1	1
17.	1307-2018	Soc. Head Cap Screw	4	4
18.	1207-1011	Felt Screw	2	2
19.	1207-1004	Cup	1	1
20.	1300-1012	Key	1	1
21.	1207-1010	Felt Seal	1	1
22.	1207-1005	Piston	1	1
23.	0720-1004	O-ring Seal	1	1
24.	1207-1014	O-ring Seal	1	1
25.	1207-1006	Cylinder	1	1
26.	1207-1007	Seal Adapter	1	1
27.	1207-1060	Retaining Ring	1	1
28.	0100-1601	Grease Fitting	1	1

INSTALLATION

The Tol-O-Matic Disc/Cone Clutch is as simple to install as a sprocket or sheave. Simply slip the clutch over the shaft to the desired position, align with keyway and insert key. After final alignment with mating sprocket or sheave, tighten set screws to lock clutch in place.

Connect air or hydraulic source (not over 100 psi pressure) to cylinder port. Make sure no side or end thrust is transmitted to clutch. Flexible hose (**not plastic tubing**) may be used. A restraining member may be necessary to prevent cylinder rotation.

MAINTENANCE

Lubrication will be required after every 4 weeks of operation. Use a lubricant such as ORE-LUBE G-1/3.* Two zerk fittings are provided for this purpose.

After long periods of operation, it may be necessary to disassemble the clutch for cleaning and inspection.

CAUTION: CLUTCHES ARE UNDER SPRING TENSION. USE CARE WHEN DISASSEMBLING.

To disassemble, remove the retaining rings from the cylinder end of the clutch shaft and slide all parts off this end. Assemble all parts onto the shaft from the opposite end. This procedure is necessary to keep from damaging the edges of the bearing seal lips. See exploded view on the other side for proper sequence of assembly.

Wipe off all old lubricant before applying fresh grease. Use Ore-Lube G-1/3 or similar. If it is necessary to remove the piston from the cylinder, re-lubricate the O-rings with a mineral base O-ring grease.

Remove any grease that may have contacted the cone and clean out any foreign material in the cup. Be careful not to re-contaminate any internal parts.

If these simple procedures are followed, your Tol-O-Matic Disc/Cone Clutch will give you years of trouble-free service.

*ORE-Lube Midwest Corp.
2480 S. Highway 100
Minneapolis, Minnesota 55416

**TOL-O-MATIC, INC.**

3800 County Road 116, Hamel, MN 55340
<http://www.Tolomatic.com> • Email: Help@Tolomatic.com
Phone: (763) 478-8000 • Fax: (763) 478-8080 • Toll Free: 1-800-328-2174



Information furnished is believed to be accurate and reliable. However, Tol-O-Matic assumes no responsibility for its use or for any errors that may appear in this document. Tol-O-Matic reserves the right to change the design or operation of the equipment described herein and any associated motion products without notice. Information in this document is subject to change without notice.