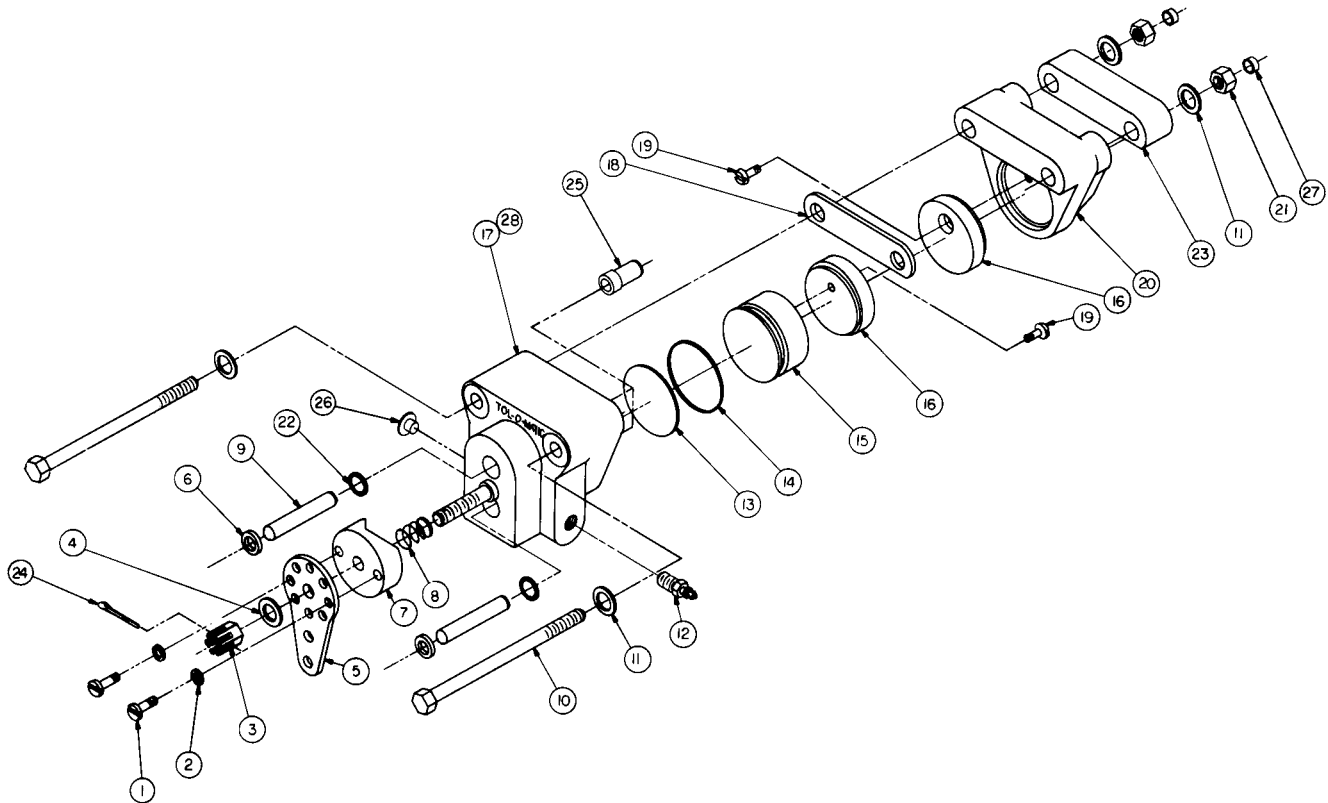
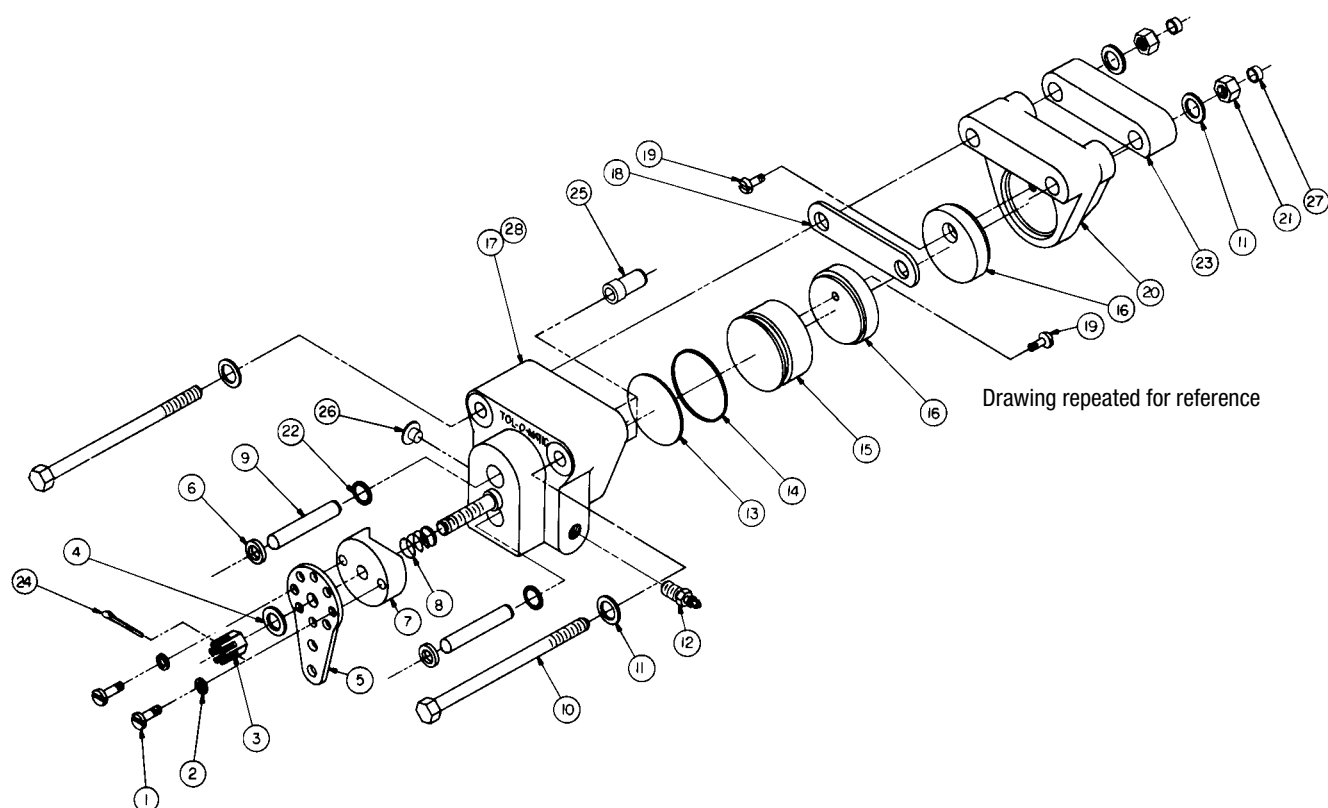


HME20MSBG 20 SERIES HYDRAULIC/MECHANICAL DUAL FUNCTION BRAKE CAST ALUMINUM

Model: HME20MSBG 0755-0101



ITEM	PART NO.	DESCRIPTION	QTY.	ITEM	PART NO.	DESCRIPTION	QTY.
1.	0707-1012	Screw	2	15.	0720-1027	Piston	1
2.	0707-1011	Lock Washer	2	16.	0720-1024	Puck	2
3.	0707-1008	Slotted Nut	1	17.	0743-1041	Live Side Housing	1
4.	0701-1007	Flat Washer	1	18.	0743-1004	Spacer .094" Thick	1
5.	0707-1007	Lever Arm	1	19.	0720-1026	Pan Head Screw	2
6.	0743-1038	Rod Wiper	2	20.	0724-1011	Dead Side Housing	1
7.	0707-1006	Cam	1	21.	0740-1022	Nut	2
8.	0707-1004	Compression Spring	1	22.	0720-1023	O-Ring, EPR, -011	2
9.	0743-1036	Actuating Pin	2	23.	0743-1035	Spacer, .75" Thick	1
10.	0720-1012	Hex Head Bolt	2	24.	0743-1048	Cotter Pin	1
11.	0720-1007	Flat Washer	4	25.	0743-1045	O-Ring Sleeve	2
12.	0740-1002	Bleeder Valve	1	26.	1001-1006	Vinyl Plug	1
13.	0726-1003	Plate Back	1	27.	0743-1043	Thread Protector	2
14.	0760-1009	O-Ring, EPR, -022	1	28.	0743-1037	Shoulder Stud	1



All caliper disc brakes listed in these instructions are designed to operate on hydraulic service and as mechanically-applied parking brakes.

HYDRAULIC SERVICE: This brake model has a letter "G" in its suffix, and contains EPR seals which are compatible **ONLY** with automotive brake fluid. **THE HME 20 CALIPER DISC BRAKE IS DESIGNED TO OPERATE AT A MAXIMUM PRESSURE OF 1000 PSI (68.9 bar).**

MECHANICAL SERVICE: There are limits to the maximum lever force which may be applied to the mechanical side of the HME20 Series Caliper Disc Brake.

The maximum lever force which may be applied is 450 lbf (2,001.7 N).

INSTALLATION: For models without floating mounting brackets, use two Grade 5 bolts and tighten to 22 ft-lbs (29.83 N-m) of torque. Care should be taken that the friction puck faces remain parallel to the disc face and that the disc is clean of any dirt or grease.

The proper clearance between friction pucks and disc should be .010 inch minimum on each side to a maximum of .031 inch per side with new friction pucks. Use the Mechanical Adjustment Nut (#3) to set the proper clearance.

Connect the hydraulic pressure supply line to the 1/8-inch NPT fitting and use the Bleeder Valve (#12) to eliminate any trapped air in the line or the brake housing.

NOTE: The HME20 Series Brake will bleed best with the brake mounted at the 4 or 5 o'clock position on the disc with the Bleeder Valve (#12) on top.

Once the brake is connected and bled, be certain that all pressure is removed when the brake is off. Residual or back pressure will cause the brake to drag, reduce puck life and cause heat buildup. If the brake is to be used with a master cylinder, be certain that any residual check valves are removed.

ADJUSTMENTS: The only adjustments that will be required will be the mechanical adjustment. The puck clearance should be checked and readjusted if the total clearance exceeds .070 inch.



3800 County Road 116, Hamel, MN 55340
<http://www.Tolomatic.com> • Email: Help@Tolomatic.com
 Phone: (763) 478-8000 • Fax: (763) 478-8080 • Toll Free: 1-800-328-2174



Information furnished is believed to be accurate and reliable. However, Tolomatic assumes no responsibility for its use or for any errors that may appear in this document. Tolomatic reserves the right to change the design or operation of the equipment described herein and any associated motion products without notice. Information in this document is subject to change without notice.